



## **On-line PICASSO PROJECT**

**Comprehensive Catalogue Raisonné  
Prof. Dr. Enrique Mallen**

**1908**



**Cinq femmes (Étude) (Baigneuses dans la forêt)**. Paris. [Spring] Early/1908. Gouache, watercolor & pencil on paper mounted on canvas. 47,5 x 58,7. The Museum of Modern Art, NYC. (Inv 28.1957). Hillman Periodicals Fund, 1957.

**OPP.08:010**; DR:126; FM:180; PP.08:085; Z.XXVI:291; AB.07:77p; AB.57\*:36p; EC.02:166; GM.11\*:34; IC.05\*:11; MN.75\*:13; NY.59a\*:199p; NY.62b\*:n/a; NY.74a\*:137; NY.76a\*:n/a; NY.77a\*:n/a; PH.58\*:n/a; RT.58\*:199p; TK.71\*:86; TO.94:280p; WR.72\*:46p; WR.80\*:106p; WR.89\*:86p; WS.11:41p

---

**Nu debout**. Paris. Early/1908. Pencil, India ink & watercolor on paper. 21 x 13,5 cm. The Picasso Estate.

**OPP.08:042**; P.II:138; PP.08:029; BE.09\*:54; NM.06:71p





**Trois femmes (Étude)**. Paris. Early/1908. Pencil & gouache on paper. 48,4 x 62,7 cm. Musée Picasso, Paris.

**OPP.08:043**; DR:125; MPP:605; P.II:139; PP.08:093; Z.XXVI:331; TO.94\*:183

**Trois femmes: nu debout (Étude)**. Paris. Early/1908. Lead pencil & gouache on paper. 32,6 x 24,9 cm. Musée Picasso, Paris.

**OPP.08:046**; DR:113; MPP:569; P.II:142; PP.08:079; Z.XXVI:329; NY.07a:43p; PD.06\*:n/a; RK.01\*:n/a; RP.06\*:96





**Trois femmes: nu debout (Étude).** Paris. Early/1908.  
Watercolor, wash & blue ink on paper. 65 x 50 cm. Fundación Almine & Bernard Ruiz-Picasso para el Arte.

**OPP.08:047**; DR:111; FM:186; P.II:143; PP.08:134;  
Z.VI:1025; GA.00\*:13; GM.11\*:36; GS.03:2.26; MI.01\*:9;  
TE.21\*:46



**Trois femmes: nu debout (Étude).** Paris.  
Early/1908. Lead pencil & violet ink on paper. 32,5 x 25  
cm. Musée Picasso, Paris. Dation 1979.

**OPP.08:048**; MPP:565; P.II:144; PP.08:139;  
Z.XXVI:306; BU.22\*:16; PD.06\*:n/a; RK.01\*:n/a





**Trois femmes: nu debout (Étude)**. Paris. Early [Spring]/1908. Oil on canvas. 150,2 x 100,3 cm. The Museum of Fine Arts, Boston. (Inv 58.976). Juliana Cheney Edwards Collection, 1958.

**OPP.08:049**; DR:116; FM:188; P.II:145; PP.08:152; Z.IIa:103; BO.59a\*:n/a; BS.22:65p; CG.93:42; DR.14\*:n/a; GM.11:166p; GM.81:16p; HU.68\*:19; IC.05:25p; JL.66\*:51; JR.96:54p; MI.53\*:14; NM.95:272p; NY.07a:43p; TO.64\*:47; WR.80\*:113p; ZU.14\*:n/a

---

**Trois femmes: nu debout, l'une avec des annotations manuscrites de couleurs (Étude)**. Paris. Early/1908. Lead pencil on paper. 25,3 x 32,5 cm. Musée Picasso, Paris. Dation 1979.

**OPP.08:050**; MPP:560; P.II:146; PP.08:127; Z.XXVI:320; BU.22\*:15; GM.81:16p; PD.06\*:n/a





**Trois femmes: nu debout (Étude)**. Paris. Early/1908. Lead pencil & gouache on paper. 62,6 x 47,8 cm. Musée Picasso, Paris. Dation 1979.

**OPP.08:051**; DR:112; MPP:568; P.II:147; PP.08:074;  
Z.XXVI:325; AB.07\*:n/a; CG.08\*:57p; HN.03\*:n/a;  
JL.66\*:23; JO.06\*:n/a; PA.79a\*:417; PD.06\*:217p;  
PP.20\*:89; RD.00\*:65; RK.01\*:n/a; RP.06\*:95; SP.04\*:n/a

**Trois femmes: nu debout (Étude)**. Paris. Early/1908. Violet ink, violet ink wash & gouache on paper. 32,4 x 25 cm. Musée Picasso, Paris. Dation 1979.

**OPP.08:052**; MPP:570; P.II:148; PP.08:075;  
Z.XXVI:326; BU.22\*:18; HS.98\*:135; MA.08a\*:n/a;  
NY.07a:43p; PD.06\*:217p; RK.01\*:n/a; RP.06\*:97





**Trois femmes buste de femme (Étude)**. Paris. [Early]/1908.  
Gouache on paper. 31,5 x 24 cm. Musée Picasso, Paris.

**OPP.08:053**; MPP:573; P.II:149; PP.08:080; Z.XXVI:330;  
MA.08a\*:n/a; NY.07a:43p



**Trois femmes (Étude)**. Paris. Early/1908. Pencil on  
paper. 32,7 x 25,1 cm. Musée Picasso, Paris. Dation  
1979.

**OPP.08:151**; MPP:566; PP.08:130; Z.XXVI:313;  
BU.22\*:17; BU.22:22p; NM.95:272p; PD.06\*:n/a;  
SY.11\*:n/a



**Paysage (Deux arbres)**. Paris. [Summer] Early/1908. Gouache on cream laid paper. 47,9 x 62,7 cm. Philadelphia Museum of Art. (Inv 1950.134.163). Louise and Walter C. Arensberg Collection.

**OPP.08:152**; DR:179; FM:111; P.II:248; P.IV:806; PP.08:100; Z.IIa:54; CG.93:47; CH.49\*:168; GM.11:169p; JC.40:64p; JC.56:42; JR.96:312p; LO.12a\*:62; NY.13\*:347; NY.26e\*:n/a; PH.13\*:n/a; PH.54b\*:167; TO.94\*:186

**Trois femmes: nu agenouillé (Étude)**. Paris. [Early]/1908. Watercolor & pencil on paper. 32,3 x 25 cm. Sotheby's. #125, L07009, 06/20/07. Formerly Sotheby's. #9, N08089, 05/03/05.

**OPP.08:222**; DR:117; PP.08:076; Z.XXVI:327; PA.71a\*:n/a; PA.73a\*:3







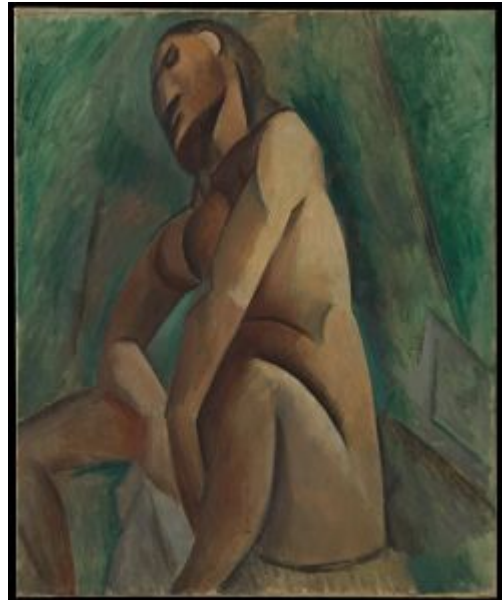
**Trois femmes: nu debout (Étude).** Paris. [Fall~Winter/1907] [Early]/1908. Pencil & watercolor on Ingres paper. 63,5 x 48,3 cm. Private collection. Formerly Christie's. #0049, 1900, 11/06/07. Národní Galerie, Prague. (Inv K 34809); Dr. Fr. Cеровský Collection.

**OPP.08:230**; DR:122; PP.08:099; DR.70\*:220; JP.60:8; NY.21g\*:14; PA.66b\*:167; PR.31\*:n/a; PR.33\*:22; PR.63\*:200; PS.05:10; TK.84c\*:82; WR.89\*:82p

---

**Femme nue assise.** Paris. Early/1908 [Winter/1908~1909]. Oil on canvas. 61 x 50,8 cm. Private collection, Houston. Formerly Parke-Bernet, New York. #39, 10/30/63; Mr. Larry Aldrich Collection, NY.

**OPP.08:232**; DR:230; FM:206; P.II:297; PP.08:282; PP.0809:015; Z.IIa:118; AB.57\*:35p; BO.59a\*:n/a; DL.67\*:13; IC.05:188p; JR.62\*:1.35; NY.54c\*:9; NY.71b\*:7; RR.06\*:152; WW.91:173p





**Buste d'homme.** Paris. [1907~] Early/1908. Oil on canvas. 40,9 x 42,5 cm. Dallas Museum of Art. (Inv 1987.399.FA). Formerly Marina Picasso Collection.

**OPP.08:233**; DR:107; P.II:133; PP.08:009; Z.XXVI:274; BA.17:187p

**Torse de femme.** Paris. [Spring] Early/1908. Gouache on paper. 62,5 x 47,6 cm. San Francisco Museum of Modern Art. (Inv 2000.305). Millennium Gift of Sara Lee Corporation. Formerly Nathan Cummings Collection, NY.

**OPP.08:234**; DR:109; FM:118; P.II:137; PP.08:045; Z.IIa:57; TA.66\*:7; TK.64\*:10; WA.70a\*:38





**Trois femmes: nu debout (Étude)**. Paris. Early/1908. Oil wash on paper. 64,5 x 45 cm. Musée Picasso, Paris. Dation 1979.

**OPP.08:235**; DR:110; FM:185; MPP:567; PP.08:149; Z.VI:1024; AB.07\*:n/a; HS.98\*:137; PA.79a\*:416; RK.01\*:n/a

**Trois femmes: nu debout (Étude)**. Paris. [Late/1907~] Early/1908. Watercolor & graphite pencil on white laid paper. 62,5 x 42,2 cm. The Metropolitan Museum of Art, NYC. (Inv 67.162). Anonymous Gift, in memory of Dr. Avrom Barnett, 1967.

**OPP.08:236**; DR:114; FM:184; PP.08:150; Z.IIa:101; DC.70\*:264; DR.86\*:17p; GT.10\*:40; NY.95b\*:n/a; PA.73c\*:70; PA.98b\*:n/a





**Trois femmes: nu debout (Étude)**. Paris. [Late/1907~] Early/1908. [Gouache on cardboard] Watercolor & charcoal on white laid paper. 61,6 x 47,3 cm. The Metropolitan Museum of Art, NYC. (Inv 1999.363.62). Jacques and Natasha Gelman Collection, 1998.

**OPP.08:237**; DR:115; FM:187; PP.08:151; Z.IIa:102; GT.10\*:41; LY.53a\*:17; MI.53\*:14; MR.94\*:n/a; NY.89b\*:102p; PA.53a\*:n/a

---

**Tête de femme**. Paris. [Spring~Summer] Early/1908. Gouache on paper glued on cardboard. 64,5 x 50 cm. Landesmuseum Mainz.

**OPP.08:244**; DR:135; FM:176; P.II:231; PP.08:263; Z.IIa:75; GA.14:23p; MU.72a\*:1852; RE.65\*:27; TA.66\*:5





**Buste de femme.** Paris. [Spring] Early/1908. Oil on canvas [OïC]. 81 x 65 cm. Private collection.

**OPP.08:245**; DR:136; FM:126; P.II:230; PP.08:191;  
Z.IIa:65; JC.56:36; MU.13b\*:47



**Tête de femme.** Paris. Early/1908. Watercolor & pencil on paper. 31 x 24 cm. Nationalgalerie, Museum Berggruen, Staatlichen Museen zu Berlin. Formerly André Lefèvre Collection, Paris.

**OPP.08:247**; DR:138; Z.XXVI:389; BL.06\*:80p;  
PA.64b\*:240; PH.69\*:n/a; PH.70b\*:n/a



**Tête de femme.** Paris. [Fall] Early/1908. Gouache on wood panel [OiC]. 27 x 21 cm. Sotheby's. #55, 05/13/86. Formerly Wilhelm Uhde Collection.

**OPP.08:248**; DR:139; FM:175; P.II:281; PP.08:262; Z.IIa:74; JC.56:50; JL.51:32; JR.96:321p; MU.13b\*:46

---

**Tête de femme.** Paris. [Early/1908]. Watercolor & pencil on paper [OiC]. 31 x 24 cm. Private collection, Paris.

**OPP.08:249**; DR:141; FM:53; PP.08:012; Z.IIb:684; AR.57\*:17





**Tête de femme.** Paris. [Early/1908]. Gouache on paper [OïC]. 31 x 24,5 cm. Arild Wahlström Collection, Oslo.

**OPP.08:250**; DR:142; PP.08:014; HU.68\*:16; HV.74\*:10; JR.96:83p; OD.58\*:11; OS.56\*:36

---

**Trois femmes: nu debout de profil (Étude).** Paris. [Early]/1908. Graphite on paper. 32,9 x 25 cm. Musée Picasso, Paris. Dation 1979.

**OPP.08:274**; MPP:574; PP.08:125; Z.XXVI:312; SY.11\*:n/a





**Trois femmes (Étude)**. Paris. [Early]/1908. Pen & sepia ink on paper. 32,7 x 25 cm. Musée Picasso, Paris. Dation 1979.

**OPP.08:275**; MPP:571; PP.08:121; Z.XXVI:309; HS.98\*:134; RK.01\*:n/a; TL.89\*:23



**Trois femmes: nu debout (Étude)**. Paris. [Early]/1908. Lead pencil on paper. 32,8 x 25 cm. Musée Picasso, Paris.

**OPP.08:276**; MPP:564; PP.08:137; Z.XXVI:304; GM.81:15p; JO.06\*:n/a; RK.01\*:n/a





**Trois femmes: nu debout (Étude)**. Paris. [Early]/1908. Lead pencil on paper. 32,8 x 25,2 cm. Musée Picasso, Paris. Dation 1979.

**OPP.08:277**; MPP:563; PP.08:138; Z.XXVI:305; PD.06\*:n/a



**Trois femmes: nu debout (Étude)**. Paris. [Early]/1908. Graphite on paper. 65,3 x 50 cm. Musée Picasso, Paris. Dation 1979.

**OPP.08:278**; MPP:562; PP.08:140; Z.XXVI:307; HO.16a\*:52p; HS.98\*:136; RK.01\*:n/a



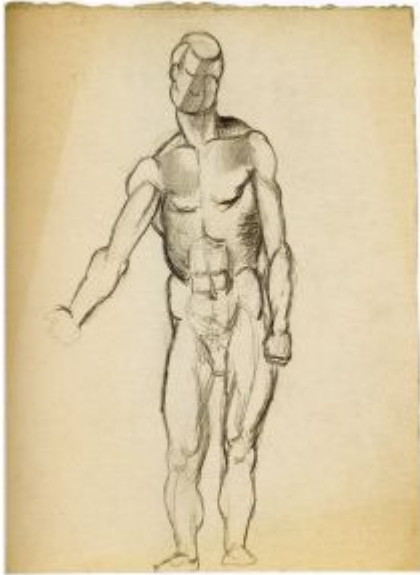
**Trois femmes: la femme de droite (Étude).** Paris. [1907  
[Early]/1908. Charcoal on paper. 62,7 x 48 cm. Musée Picasso,  
Paris. Dation 1979.

**OPP.08:280**; MPP:556; PP.08:043; Z.XXVI:278; AB.07\*:n/a;  
JO.06\*:n/a; MA.08a\*:n/a; MP.02\*:30; PA.79a\*:431;  
RP.06\*:99

**Trois nus.** Paris. [Early]/1908. Gouache on cream  
wove paper. 17,9 x 14,8 cm. Philadelphia Museum of  
Art. (Inv 1967.30.69). The Samuel S. White III and  
Vera White Collection, 1967.

**OPP.08:283**





**Homme debout.** Paris. Winter/1908. Pencil on paper. 32,5 x 24,5 cm. Private collection.

**OPP.08:298**; BE.09\*:52

**Nu au bras levé.** Paris. Early/1908. Pencil, pen & India ink on laid writing paper. 21 x 13,4 cm. Maya Widmaier Picasso Collection, Paris. (Inv 00941).

**OPP.08:303**; PP.08:087; Z.XXVI:293; BB.86\*:3





**Femme nue debout.** Paris. Early/1908. Graphite on paper. 62,5 x 47,5 cm. Museo Picasso, Málaga. On temporary loan from Fundación Almine & Bernard Ruiz-Picasso para el Arte.

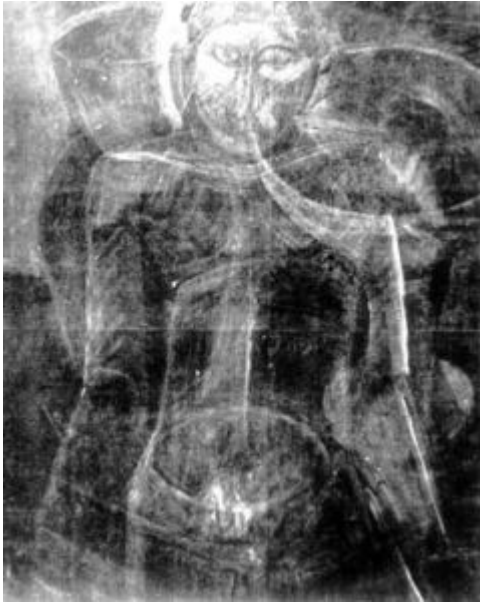
**OPP.08:326**; PP.08:272; Z.VI:994; DP.20\*:17

---

**Homme nu debout.** Paris. Early/1908. Graphite on paper. 32,3 x 24,3 cm. Private collection.

**OPP.08:327**; Z.VI:996





**Femme debout.** Paris. Pre-Spring/1908. X-radiograph of oil on canvas [Underlayer of *Bols et cruche (Cruche, bol et comptier)*]. 81,9 x 65,7 cm. Philadelphia Museum of Art. (Inv 1952.61.93). A. E. Gallatin Collection.

**OPP.08:311**

---

**Homme nu debout.** Paris. Early/1908. Pen & ink on paper. 32,3 x 24,5 cm. Private collection.

**OPP.08:328**; PP.08:179; Z.VI:998





**Trois femmes (Étude)**. Paris. [Late/1907~] Winter~Spring [Fall]/1908. Charcoal on white laid paper. 63,5 x 48,3 cm. The Metropolitan Museum of Art, NYC. (Inv 1999.363.61). Jacques and Natasha Gelman Collection, 1998.

**OPP.08:014**; FM:189; PP.08:035; Z.IIb:707; AB.07:79p; AB.57\*:36p; GT.10\*:43; JL.67b:34p; JW.03:150p; LS.75:92; MR.94\*:n/a; NY.21g\*:13; NY.69b\*:n/a; NY.89b\*:105p; PD.82:44p; PH.58\*:47; WR.80\*:114p; WR.89\*:86p; WW.91:160p

---

**Trois femmes: ensemble (Étude)**. Paris. [February]/1908. Pen & India ink on paper. 14,3 x 9,5 cm. Musée Picasso, Paris. Sketchbook 1059. Jacqueline Roque Picasso Collection. Dation 1990.

**OPP.08:076**; MPP:1990.97.08v; P.II:173; PP.08:017; BL.96:14.8v; GR.90\*:94



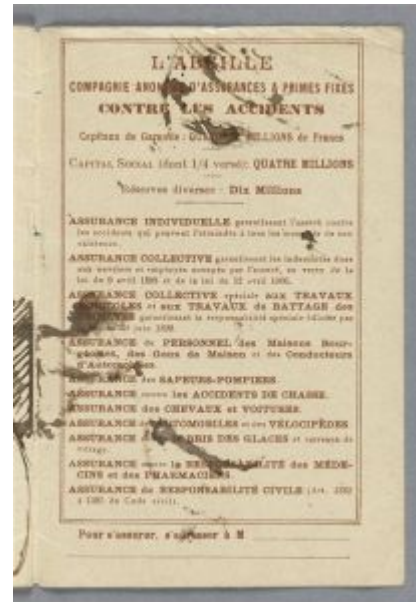


**Tête de femme.** Paris. [February]/1908. India ink on paper. 14,3 x 9,5 cm. Musée Picasso, Paris. Sketchbook 1059. Jacqueline Roque Picasso Collection. Dation 1990.

**OPP.08:088**; MPP:1990.97.07r; P.II:189; PP.08:015; Z.XXVI:282; BL.96:14.7r; GR.90\*:94

**Page de publicité pour la société d'assurances L'Abeille.** Paris. [February]/1908. Printed matter. 14,3 x 9,5 cm. Musée Picasso, Paris. Jacqueline Roque Picasso Collection, Dation 1990.

**OPP.08:106**; MPP:1990.97.c3; BL.96:14.c3



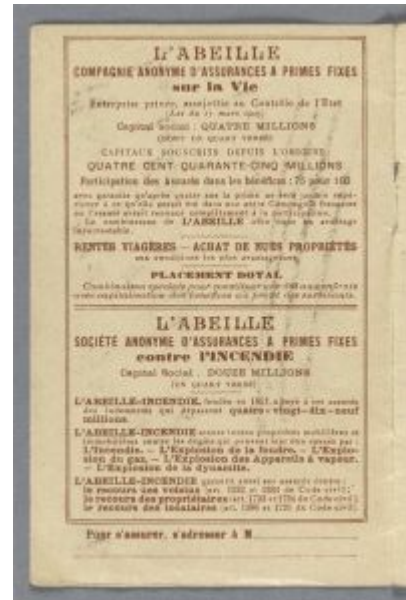


**Report du dessin.** Paris. [February]/1908. Black ink on paper. 14,3 x 9,5 cm. Musée Picasso, Paris. Jacqueline Roque Picasso Collection, Dation 1990.

**OPP.08:109**; MPP:1990.97.12r; BL.96:14.12r

**Page de publicité pour la société d'assurances L'Abeille.** Paris. [February]/1908. Printed matter. 14,3 x 9,5 cm. Musée Picasso, Paris. Jacqueline Roque Picasso Collection, Dation 1990.

**OPP.08:120**; MPP:1990.97.c2; BL.96:14.c2







**Page de publicité pour la société d'assurances L'Abeille.** Paris. [February]/1908. Printed matter. 14,3 x 9,5 cm. Musée Picasso, Paris. Jacqueline Roque Picasso Collection, Dation 1990.

**OPP.08:122**; MPP:1990.97.c4; BL.96:14.c4

**Trois femmes: le nu central (Étude).** Paris. [February]/1908. Pen & black ink on paper. 14,3 x 9,5 cm. Musée Picasso, Paris. Sketchbook 1059. Jacqueline Roque Picasso Collection. Dation 1990.

**OPP.08:314**; MPP:1990.97.06v; PP.08:021; Z.XXVI:285; BL.96:14.6v; GR.90\*:94





**Trois femmes: étude d'ensemble.** Paris. [February]/1908. Pen & black ink on paper. 14,3 x 9,5 cm. Musée Picasso, Paris. Sketchbook 1059. Jacqueline Roque Picasso Collection. Dation 1990.

**OPP.08:315**; MPP:1990.97.09v/10r; PP.08:019; BL.96:14.9v/10r; GR.90\*:94

**Couverture.** Paris. [February]/1908. Ink on cardboard. 14,3 x 9,5 cm. Musée Picasso, Paris. Sketchbook 1059. Jacqueline Roque Picasso Collection. Dation 1990.

**OPP.08:316**; MPP:1990.97.c1; BL.96:14.c1; GR.90\*:94





**Deux têtes pour Trois femmes.** Paris. [February]/1908. India ink on paper. 14,3 x 9,5 cm. Musée Picasso, Paris. Sketchbook 1059. Jacqueline Roque Picasso Collection. Dation 1990.

**OPP.08:336**; MPP:1990.97.12v; PP.08:020; Z.XXVI:283; BL.96:14.12v

---

**Esquisse d'ensemble des Trois femmes.** Paris. [February]/1908. Pen & black ink on paper. 14 x 9 cm. Musée Picasso, Paris.

**OPP.08:357**; MPP:1990.97.07v; PP.08:016; BL.96:14.7v





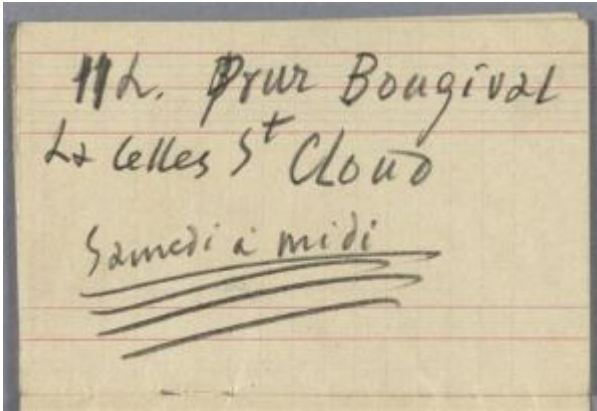
**Nu debout.** Paris. [February]/1908. Pen & black ink on paper. 14 x 9 cm. Musée Picasso, Paris.

**OPP.08:358**; MPP:1990.97.09r; PP.08:018; BL.96:14.9r

**Deux études pour Trois femmes.** Paris. [February]/1908. India ink on paper. 14,5 x 9 cm. Musée Picasso, Paris.

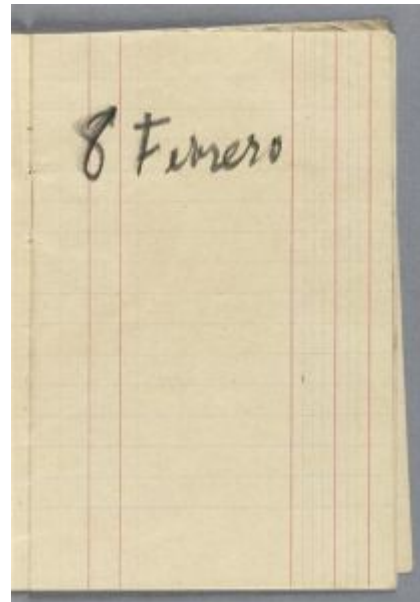
**OPP.08:359**; MPP:1990.97:11v; PP.08:022; BL.96:14.11v





**Inscription.** Paris. [February]/1908. Black pencil on paper. 14,3 x 9,5 cm. Musée Picasso, Paris. Jacqueline Roque Picasso Collection. Dation 1990.

**OPP.08:362**; MPP:1990.97.01r; BL.96:14.1r



**Inscription.** Paris. [February]/1908. Black pencil on paper. 14,3 x 9,5 cm. Musée Picasso, Paris. Jacqueline Roque Picasso Collection, Dation 1990.

**OPP.08:363**; MPP:1990.97.04r; BL.96:14.4r



**Report du dessin.** Paris. [February]/1908. Black ink on paper. 14,3 x 9,5 cm. Musée Picasso, Paris. Jacqueline Roque Picasso Collection, Dation 1990.

**OPP.08:364**; MPP:1990.97.08r; BL.96:14.8r

**Trois femmes (Version rythmée).** Paris. Early-Spring/1908. Oil on canvas. 91 x 91 cm. Sprengel Museum, Hannover.

**OPP.08:055**; DR:123; FM:182; P.II:152;  
PP.08:156; Z.IIa:107; AB.07:77p;  
AP.11:82p; AP.97:100p; DP.20:96p;  
GM.81:19p; GT.10:40.2; HN.69\*:31;  
HN.73\*:11; IC.05\*:8; JR.96:91p;  
MS.24\*:3; NY.07a:44p; PD.09:120p;  
RS.59\*:65; UP.00:276; WR.80\*:113p





**Trois femmes: les trois nus (Étude)**. Paris. Early-Spring/1908.  
Lead pencil & India ink on tracing paper. 31 x 21 cm. Musée  
Picasso, Paris. Dation 1979.

**OPP.08:057**; MPP:582; P.II:154; PP.08:069; Z.XXVI:317;  
AP.11:82p; AP.97:100p; BU.22\*:22; NM.95:255p

---

**Trois femmes (Étude)**. Paris. Early-Spring/1908. Lead  
pencil on paper. 32,5 x 24,7 cm. Private collection.

**OPP.08:058**; P.II:155; PP.08:070; Z.XXVI:321;  
GM.81:20p; HS.98\*:142





**Trois femmes (Étude)**. Paris. Early-Spring/1908. Charcoal, violet ink & gouache on paper. 31 x 24,5 cm. Musée Picasso, Paris. Dation 1979.

**OPP.08:059**; MPP:586; P.II:156; PP.08:128; Z.XXVI:322; PA.79a\*:n/a



**Trois femmes: trois nus (Étude)**. Paris. Early-Spring/1908. Blue ink & gouache on paper. 30,9 x 23,6 cm. Musée Picasso, Paris. Dation 1979.

**OPP.08:060**; MPP:585; P.II:157; PP.08:129; Z.XXVI:323; PA.79a\*:n/a





**Trois femmes: les trois nus (Étude)**. Paris. Early-Spring/1908. Wash of India ink & gouache on paper. 32,9 x 25 cm. Musée Picasso, Paris. Dation 1979.

**OPP.08:061**; MPP:587; P.II:158; PP.08:097; Z.XXVI:334; PA.79a\*:n/a

---

**Trois femmes: les trois nus (Étude)**. Paris. Early-Spring/1908. Blue ink on paper. 24 x 32,2 cm. Musée Picasso, Paris. Dation 1979.

**OPP.08:062**; MPP:584; P.II:159; PP.08:073; Z.XXVI:324; AP.11:84p; AP.97:101p; PA.79a\*:n/a





**Trois femmes: les trois nus (Étude)**. Paris. Early-Spring/1908. Lead pencil on paper. 32,5 x 25,2 cm. Musée Picasso, Paris.

**OPP.08:063**; MPP:583; P.II:160; PP.08:071; Z.XXVI:318

**Trois femmes: les trois nus (Étude)**. Paris. Early-Spring/1908. Lead pencil & gouache on paper. 33 x 24,7 cm. Musée Picasso, Paris. Dation 1979.

**OPP.08:064**; MPP:589; P.II:161; PP.08:103; Z.XXVI:336; BU.22\*:21; HS.98\*:140; NY.07a:45p; SP.04\*:n/a; WR.80\*:112p





**Trois femmes: les trois nus (Étude)**. Paris. Early-Spring/1908. Pencil & gouache on paper. 32,5 x 24,7 cm. Musée Picasso, Paris. Dation 1979.

**OPP.08:065**; DR:119; MPP:590; P.II:162; PP.08:095; Z.XXVI:332; JR.96:90p; NY.07a:45p; PA.79a\*:n/a



**Trois femmes: trois femmes (Étude)**. Paris. Early-Spring/1908. Lead pencil & gouache on paper. 32,8 x 25,4 cm. Musée Picasso, Paris. Dation 1979.

**OPP.08:066**; DR:121; MPP:591; P.II:163; PP.08:098; Z.XXVI:335; HN.03\*:n/a; NY.07a:45p; PA.79a\*:n/a



**Trois femmes: les trois nus (Étude)**. Paris. Early-Spring/1908. Black pencil & India ink on paper. 32,2 x 25,2 cm. Musée Picasso, Paris. Dation 1979.

**OPP.08:067**; MPP:597; P.II:164; PP.08:096; Z.XXVI:333; BU.22\*:23; HS.98\*:141; TO.94:30p

---

**Trois femmes: trois femmes (Étude)**. Paris. Early-Spring/1908. Brown ink on paper. 32,2 x 24,4 cm. Musée Picasso, Paris. Dation 1979.

**OPP.08:068**; MPP:580; P.II:165; PP.08:067; Z.XXVI:315; BU.22\*:20





**Trois femmes: les trois nus (Étude)**. Paris. Early-Spring/1908. Lead pencil & watercolor on paper. 33 x 25,2 cm. Musée Picasso, Paris.

**OPP.08:069**; MPP:595; P.II:166; PP.08:106; Z.XXVI:339; NY.07a:45p

**Trois femmes: les trois nus (Étude)**. Paris. Early-Spring/1908. Lead pencil & watercolor on paper. 32,5 x 25 cm. Musée Picasso, Paris.

**OPP.08:070**; MPP:593; P.II:167; PP.08:107; Z.XXVI:340; AP.11:84p; AP.89:76p; AP.97:101p; NY.07a:45p





**Trois femmes: les trois nus (Étude)**. Paris. Early-Spring/1908. Lead pencil & watercolor on paper. 32,5 x 25,2 cm. Musée Picasso, Paris.

**OPP.08:071**; MPP:598; P.II:168; PP.08:108; Z.XXVI:341; NY.07a:45p

---

**Trois femmes: les trois nus (Étude)**. Paris. Early-Spring/1908. Lead pencil, charcoal & watercolor on paper. 33 x 25 cm. Musée Picasso, Paris.

**OPP.08:072**; MPP:594; P.II:169; PP.08:104; Z.XXVI:337; DP.20:96p





**Trois femmes: les trois nus (Étude).** Paris. Early-Spring/1908. Lead pencil & violet ink on paper, on back of reproduction of Othon Friesz work. 18,6 x 14,3 cm. Musée Picasso, Paris. Dation 1979.

**OPP.08:073**; MPP:596; P.II:170; PP.08:105; Z.XXVI:338; BU.22\*:24

---

**Trois femmes: les trois nus (Étude).**

Paris. Early-Spring/1908. Lead pencil, blue ink & gouache on paper. [25] 24,5 x 33 cm. Musée Picasso, Paris. Dation 1979.

**OPP.08:074**; MPP:592; P.II:171; PP.08:078; Z.XXVI:328; AP.11:84p; AP.97:101p; BU.22\*:19; WR.80\*:112p





**Trois femmes (Étude)**. Paris. Early-Spring/1908. Charcoal on paper. 63 x 48,5 cm. Sotheby's. #43, L20010, 06/18/20. Formerly Marina Picasso Collection. (Inv 954).

**OPP.08:077**; P.II:174; PP.08:126; Z.XXVI:319; GS.85\*:13

---

**Trois femmes (Étude)**. Paris. Early-Spring/1908. Pen & ink on paper. 27 x 21 cm. The Picasso Estate.

**OPP.08:079**; P.II:176; PP.08:072







**Trois femmes (Étude).** Paris. Early-Spring/1908. Watercolor & gouache on paper. 54 x 47,7 cm. The Pushkin State Museum of Fine Arts, Moscow. Formerly S. I. Shchukin Collection, Moscow.

**OPP.08:239**; DR:120; FM:183; PP.08:155; Z.IIa:106; AB.07:77p; AP.11:85p; AP.89:30; AP.97:102p; WR.80\*:112p



**Trois femmes: les trois nus (Étude).** Paris. Early-Spring/1908. Graphite on paper. 32,5 x 24,7 cm. Musée Picasso, Paris. Dation 1979.

**OPP.08:318**; MPP:588; PA.79a\*:n/a



**Trois femmes (Étude)**. Paris. Early-Spring/1908. Gouache on paper on cardboard. 51 x 48 cm. Musée National d'Art Moderne, Centre Georges Pompidou, Paris. (Inv AM.2465D). Gift of Mr. & Mrs. André Lefèvre, 1952.

**OPP.08:351**; DR:124; FM:181; P.II:150; PP.08:153; Z.IIa:104; AB.07:77p; AP.11:82p; AP.97:100p; IC.05\*:9; JR.96:318p; PA.64b\*:25; UP.00:278; WR.80\*:112p; WR.89\*:82p; WS.11:41p; ZU.14\*:n/a

**Bols et cruche (Cruche, bol et compotier)**. Paris. [Summer] Spring/1908. Oil on canvas [Overlayer of *Femme debout*]. 81,9 x 65,7 cm. Philadelphia Museum of Art. (Inv 1952.61.93). A. E. Gallatin Collection.

**OPP.08:002**; DR:177; FM:154; P.II:199; PP.08:189; Z.IIa:63; AB.36a\*:206; AB.39a\*:79; AB.46:64p; BS.90a\*:24; EF.66:5; GH.59:26p; JB.92\*:8; JR.96:44p; MS.00a:56p; NY.13\*:345; NY.29k\*:n/a; NY.29l\*:2; NY.33b\*:98; NY.72a\*:72; PH.43\*:n/a; UH.98:17; WR.80\*:107p; WR.89\*:93p





**Nu appuyé (Femme étendue)**. Paris. [Spring]/1908. Gouache on wood. 21 x 27 cm. Christie's. #13, 3442, 11/04/13. Formerly Marina Picasso Collection. (Inv 12098).

**OPP.08:017**; DR:155; P.II:306; PP.08:109; Z.XXVI:363; DD.61:59p; GE.86a\*:97; MA.01a\*:11; MB.84\*:31; MP.81\*:57; MP.83\*:41; NY.87c\*:1; PD.02\*:14; RB.87\*:8; ST.88\*:13; TK.88\*:4; VE.81\*:70; VI.05\*:132

---

**Tête d'homme**. Paris. [Fall] Spring [Late]/1908. Gouache on wood panel. 27 x 21,3 cm. Musée Picasso, Paris. Dation 1979.

**OPP.08:023**; DR:152; MPP:25; P.II:210; Z.XXVI:394; AB.05b\*:37; AB.07\*:204p; DD.61:65p; MA.08a\*:n/a; MN.80\*:n/a; MP.85:24; PA.18e\*:8; PA.23a\*:46p; PA.79a\*:37; WR.80\*:116p; WW.91:170p





**Étude d'un buste de femme, bras levé.** Paris. [Fall] Spring/1908. Pencil on paper. 63 x 48 cm. Sotheby's. #573, L16005, 02/05/16. Formerly Marina Picasso Collection. (Inv 1019).

**OPP.08:039**; PP.08:157; GE.86a\*:94; GS.85\*:14; WR.89\*:110p; WS.86:14

---

**Nu debout. Torse.** Paris. [Spring]/1908. Pencil on paper. 64,5 x 49,5 cm. The Picasso Estate.

**OPP.08:041**; P.II:136; PP.08:226; Z.XXVI:356





**Trois femmes: nu debout au bras levé (Étude)**. Paris. [Spring]/1908. Lead pencil & India ink on paper. 62,6 x 48,3 cm. Musée Picasso, Paris. Dation 1979.

**OPP.08:045**; MPP:557; P.II:141; PP.08:040; Z.XXVI:279; AB.07\*:n/a; JO.06\*:n/a; MP.02\*:29; PA.79a\*:432

---

**Trois femmes: la femme de droite (Étude)**. Paris. Spring/1908. Black pencil on paper. 63 x 48 cm. Musée Picasso, Paris.

**OPP.08:075**; MPP:555; P.II:172; PP.08:131; Z.XXVI:351; AP.97:96p; PD.06\*:n/a





**Trois femmes: la femme de gauche (Étude)**. Paris. Spring/1908. Brown ink on paper. 19,7 x 15,2 cm. Musée Picasso, Paris.

**OPP.08:078**; MPP:578; P.II:175; PP.08:090; Z.XXVI:296

---

**Trois femmes: femme assise (Étude)**. Paris. [Fall] Spring/1908. Conté crayon on paper. 62,5 x 48,5 cm. Catherine Hutin-Blay Collection, Paris. Formerly Jacqueline Roque Picasso Collection.

**OPP.08:080**; P.II:177; PP.08:132; Z.VI:993; BE.09\*:25; GL.81\*:5; MA.86\*:5; MM.06\*:6; MR.03\*:43p; NM.06:71p; WR.89\*:110p





**Trois femmes: la femme de gauche (Étude)**. Paris. [Fall] Spring/1908. Lead pencil, India ink & gouache on paper. 62,5 x 48 cm. Musée Picasso, Paris. Dation 1979.

**OPP.08:081**; DR:129; MPP:577; P.II:178; PP.08:158; Z.VI:1014; AB.07\*:n/a; BJ.19\*:n/a; BL.91:67p; JO.06\*:n/a; MA.08a\*:n/a; PA.79a\*:n/a; PD.06\*:219p

**L'offrande (Étude)**. Paris. [Spring] /1908. Pencil on paper. 13,5 x 21 cm. Musée Picasso, Paris. Sketchbook 106.

**OPP.08:083**; MPP:1863.066r; P.II:182; PP.08:174; BL.96:15.66r; JR.96:81p





**L'offrande (Étude)**. Paris. Spring/1908. Lead pencil & watercolor on paper. 47,5 x 62,5 cm. Nationalgalerie, Kupferstichkabinett, Staatliche Museen zu Berlin. (Inv 73-1992, Kdz 27448). Formerly Marina Picasso Collection. (Inv 01119).

**OPP.08:084**; DR:159; FM:121; P.II:183;  
PP.08:182; Z.VI:1057; HN.00\*:23; MP.81\*:56;  
NY.87c\*:16; RB.87\*:2; RD.00\*:64

---

**L'offrande (Étude)**. Paris. Spring/1908. Pencil on paper. 21 x 13,5 cm. Musée Picasso, Paris. Sketchbook 106.

**OPP.08:085**; FM:120; MPP:1863.093v;  
P.II:185; PP.08:169; Z.IIb:686;  
BL.96:15.93v; JR.96:81p







**L'offrande (Étude)**. Paris. Spring/1908. Pen & India ink on pencil. 21 x 13,5 cm. Musée Picasso, Paris. Sketchbook 106.

**OPP.08:086**; MPP:1863.089v; P.II:187;  
PP.08:175; BL.96:15.89v



**L'offrande (Étude)**. Paris. Spring/1908. Gouache on paper. 30,6 x 30,6 cm. Museu Picasso, Barcelona. Donated by Lord Amulree, 1985.

**OPP.08:087**; DR:161; MPB:112.761;  
P.II:188; PP.08:183; AB.07:190p;  
BA.12b\*:99p; CG.08\*:n/a; CK.10\*:244;  
CR.98:73p; JR.96:81p; LO.54b\*:n/a;  
LU.86\*:n/a; TO.95b:42p; TO.97\*:A1;  
TZ.99\*:n/a



**L'offrande: nu couché avec personnages (Étude)**. Paris. Spring/1908. Pencil on paper. 21 x 13,5 cm. Musée Picasso, Paris. Sketchbook 106.

**OPP.08:089**; FM:137; MPP:1863.082v; P.II:192; PP.08:027; Z.IIb:690; BL.96:15.82v



**L'offrande: nu couché avec personnages (Étude)**. Paris. Spring/1908. Pencil on paper. 21 x 13,5 cm. Musée Picasso, Paris. Sketchbook 106.

**OPP.08:090**; FM:136; MPP:1863.081v; P.II:193; PP.08:028; Z.IIb:689; BL.96:15.81v



**Pot et fruits (Mort aux rat).** Paris. Spring/1908. Watercolor on paper. [62,5 x 48] 62,9 x 47,6 cm. Sotheby's. #340, N10148, 11/13/19.

**OPP.08:093**; P.II:197; PP.08:254; Z.XXVI:360; EH.96:73p

---

**Deux femmes.** Paris. Spring/1908. Pencil & India ink on paper. 64,5 x 49,5 cm. The Picasso Estate.

**OPP.08:095**; P.II:200; PP.08:113; Z.VI:975





**Josep Fontdevila nu assis.** Paris. Spring/[1908]. Lead pencil on paper [Obverse of *Personnages en barque dans un paysage*]. 48 x 32 cm. The Picasso Estate.

**OPP.08:096**; P.II:201; PP.08:053; Z.XXVI:372

---

**Femme nue de profil.** Paris. Spring/1908. Gouache on paper [Obverse of *Portrait de Guillaume Apollinaire, moitié supérieure*]. 32 x 25 cm. Musée Picasso, Paris. Dation 1979.

**OPP.08:097**; DR:165; FM:45; MPP:575.r; P.II:202; PP.08:032; Z.IIa:39; AB.97b\*:71; CG.05:31; LS.88:48; MN.80\*:n/a; PA.79a\*:418; PD.06\*:82p; PP.20\*:90; UP.00:281; WR.80\*:108p





**Josep Fontdevila nu debout.** Paris. Spring/[1908]. Lead pencil on paper. 48 x 32 cm. The Picasso Estate.

**OPP.08:098**; P.II:203; PP.08:054

---

**Nature morte: crâne, encrier, marteau.**  
[Paris]. [1907] [Spring~Summer]  
Spring/1908. Pen, brush, India ink & wash  
on paper. 48,2 x 63,5 cm. Musée Picasso,  
Paris. Dation 1979.

**OPP.08:100**; MPP:549; P.II:214;  
PP.07:779; Z.XXVI:192; AB.07\*:216p;  
AP.97:82p; JB.92\*:5; UW.84\*:42





**Nature morte: poisson, crâne et encrier.** Paris. [Spring/1907] Spring/1908. India ink & wash on paper. 47,7 x 63,5 cm. Musée Picasso, Paris. Dation 1979.

**OPP.08:101**; MPP:548; P.II:217; PP.07:778; Z.XXVI:193; AB.07\*:n/a; AP.97:82p; BA.18\*:114p; JB.92\*:6; MA.08a\*:n/a; MN.80\*:17; RK.01\*:n/a; TK.04\*:n/a; UW.84\*:41; WR.80\*:93p

**Nature morte: poisson, crâne et encrier (Étude).** Paris. Spring/1908. India ink wash on paper. 48 x 63,5 cm. The Picasso Estate.

**OPP.08:102**; P.II:218; PP.07:777; Z.XXVI:191





**Nu assis (Étude)**. Paris. Spring/1908. India ink on paper. 64,4 x 49,5 cm. Musée Picasso, Paris.

**OPP.08:103**; MPP:620.v; P.II:221; PP.08:118; Z.VI:970;  
PD.06\*:n/a

---

**Nu assis**. Paris. Spring/1908. Bronze. 11 x 9 x 10,5 cm. Musée Picasso, Paris. Dation 1979. Also Christie's. #351, 2354, 11/04/10; Sotheby's #359, L07005, 02/06/07.

**OPP.08:104**; FM:193; MPP:241; P.II:223;  
PP.08:120; WS:23.II; AB.07\*:n/a; MA.97a\*:38;  
MP.85:284; PA.79a\*:33; PA.79a\*:33; UP.00:285





**Homme assis.** Paris. Spring/1908. Charcoal, India ink & gouache on paper. 62,8 x 48 cm. Musée Picasso, Paris. Dation 1979.

**OPP.08:105**; DR:145; FM:139; MPP:572; P.II:225;  
PP.08:064; Z.XXVI:308; AB.07\*:205p; GT.10:42.1; JL.66\*:31;  
JO.06\*:n/a; ME.82a:15; ND.01\*:59; RK.01\*:n/a; SD.05\*:15;  
SP.04\*:n/a



**Homme debout, mains jointes.** Paris. [~1907]  
Spring/1908. Charcoal & India ink on paper. 63 x 48  
cm. Catherine Hutin-Blay Collection, Paris.

**OPP.08:107**; P.II:227; PP.07:531; Z.XXVI:284;  
GR.90:136p; WR.96:31p





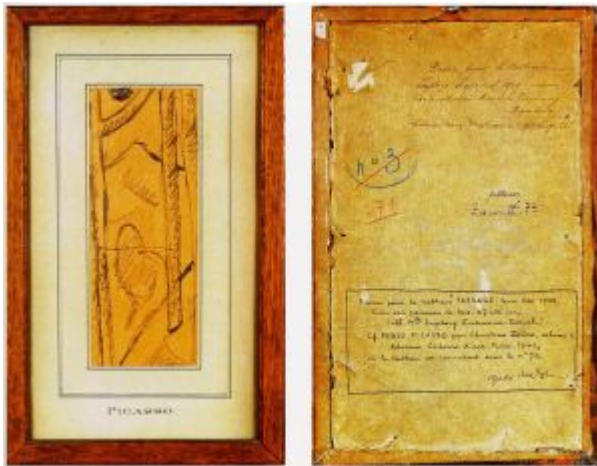
**Homme assis: homme nu assis (Étude).** Paris. [Summer] Spring/1908. Lead pencil on paper. 25,3 x 17,6 cm. Musée Picasso, Paris. Sketchbook 106.

**OPP.08:108**; P.II:228; PP.08:055; Z.XXVI:302; GA.00\*:12; JR.14\*:47p; MG.04b\*:29



**Deux femmes nues debout.** Paris. Spring/1908. Oil on cardboard mounted on wood. 41 x 33 cm. Private collection.

**OPP.08:167**; DR:163; PP.08:046; BE.09\*:23; MA.86\*:4; MM.06\*:5



**Paysage (Étude)**. [Paris]. [Spring]/1908. Ink on paper. S/U. Private collection. Formerly André Breton Collection.

**OPP.08:229**; PP.08:161; AB.05a:100

**Trois femmes: la femme de gauche (Étude)**. Paris. Spring/1908. Gouache on paper. 62,7 x 48 cm. Musée Picasso, Paris. Dation 1979.

**OPP.08:231**; DR:130; MPP:576; PP.08:042; Z.XXVI:271; AB.07\*:n/a; AB.12\*:111p; JL.66\*:26; JO.06\*:n/a; PD.06\*:218p; RD.00\*:66





**Trois femmes (Étude)**. Paris. Spring/1908.  
Watercolor & pencil on paper [OIC]. 24,5 x 32 cm.  
Private collection.

**OPP.08:238**; DR:118; PP.08:077

---

**Tête de femme**. Paris. [Early] [Fall] Spring/1908.  
Pencil & watercolor on paper. 31,8 x 24,1 cm. The  
Metropolitan Museum of Art, NYC. (Inv 1999.363.60).  
Jacques and Natasha Gelman Collection, 1998.

**OPP.08:246**; DR:137; FM:52; P.II:278; PP.08:011;  
Z.IIb:682; BS.22\*:34; GT.10\*:44; NY.89b\*:101p;  
WW.94\*:n/a





**Trois hommes.** Paris. Spring/1908. Gouache on paper. 63,5 x 48 cm. Philadelphia Museum of Art. (Inv 50.134.165). Louise and Walter C. Arensberg Collection.

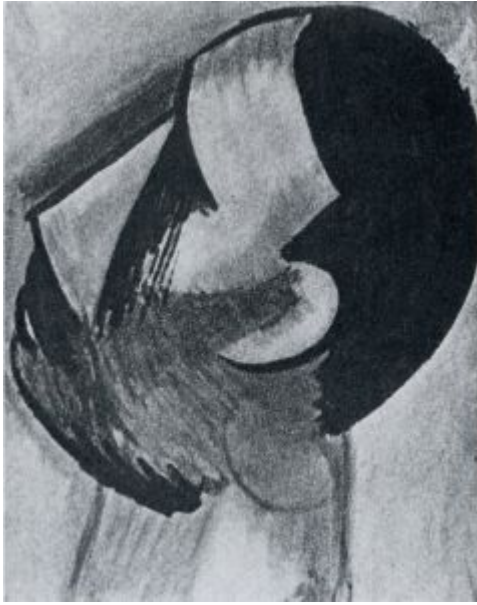
**OPP.08:252**; DR:146; FM:138; P.II:224; PP.08:065; Z.IIa:77; CH.49\*:170; GT.10:42.2; LO.37a\*:18; LO.39a\*:8; PH.54b\*:168

---

**Tête (Étude).** Paris. Spring/1908. Gouache on paper. 31 x 24 cm. Erik Wahlström Collection, Oslo.

**OPP.08:253**; DR:147; PP.08:034; HU.68\*:17; HV.74\*:11; OD.58\*:10; OS.56\*:35





**Tête d'homme.** Paris. Spring/1908. Gouache on wood panel [OIC]. 27 x 21 cm. The Picasso Estate.

**OPP.08:255**; DR:149; Z.XXVI:395

---

**L'offrande: deux têtes d'homme (Étude).** Paris. [Spring]/1908. Gouache & pencil on paper. 31 x 24 cm. Jewett Art Center, Wellesley College, MA.

**OPP.08:256**; DR:150; P.II:211; PP.08:177; PP.09:200; Z.XXVI:396; BO.59a\*:n/a; JR.62\*:1.36; TK.64\*:11





**L'offrande: tête d'homme (Étude)**. Paris. [Spring]/1908.  
Watercolor on paper. 31,4 x 24,4 cm. Queensland Art Gallery,  
South Brisbane. Major Harold de Vahl Gift.

**OPP.08:257**; DR:151; FM:248; PP.08:176; PP.09:159;  
Z.IIb:716; AU.89\*:15; LO.47\*:3



**L'offrande: buste d'homme (Étude)**. Paris.  
Spring/1908. Gouache on paper [Oic]. 62,5 x 48 cm.  
Private collection.

**OPP.08:258**; DR:160; FM:117; P.II:186; PP.08:180;  
Z.IIa:56; JC.56:5; OS.56\*:37; ST.54\*:n/a



**Bols (Vase, fruit, bol)**. [Paris]. Spring/1908. Oil on canvas [OIC]. 33 x 46 cm. Private collection.

**OPP.08:259**; DR:174; FM:155; P.II:196; PP.08:201; Z.IIa:69

---

**L'offrande (Étude)**. Paris. Spring/1908. Gouache on paper on canvas. 46,5 x 51,5 cm. Von der Heydt Museum, Wuppertal. (Inv G.0790). Dr. Eduard Freiherr von der Heydt Bequest, Ascona.

**OPP.08:268**; DR:162; FM:119; P.II:184; PP.08:181; Z.IIa:61; KZ.32\*:286; MS.24\*:2; MU.55\*:18; ZU.44\*:n/a





**Trois femmes: nu debout (Étude)**. Paris. Spring/1908.  
Graphite & India ink on paper. 33 x 25,1 cm. Musée Picasso,  
Paris. Dation 1979.

**OPP.08:279**; MPP:561; PP.08:122; Z.XXVI:310; PA.79a\*:415;  
PD.06\*:n/a

**Paysage**. Paris. [1907~] Spring/1908. Watercolor on  
paper. 22,3 x 17,5 cm. Private collection, Paris.

**OPP.08:288**; PP.07:511; Z.VI:1020; CG.08\*:54p;  
TO.94\*:184







**Homme assis et Trois hommes (Étude).** Paris. Spring/1908. Charcoal & graphite on white laid paper. 63,2 x 47,9 cm. The Metropolitan Museum of Art, NYC. (Inv 1984.433.278). Bequest of Scofield Thayer, 1982.

**OPP.08:289**; PP.08:063; Z.IIb:706; BS.55:250; CG.12\*:6; GT.10\*:42; PA.98b\*:n/a

**L'atelier de l'atelier de l'artiste au Bateau-Lavoir.** Paris. Spring/1908. Gelatin silver print. 11,1 x 8,1 cm. Cahiers d'art Collection, Paris.

**OPP.08:297**; AB.97b\*:79; GR.90:118p; JR.14\*:43p; JR.96:41p; PD.94:70; TU.15:50p; WR.96:184p





**Nu debout.** Paris. [Spring]/1908. Graphite on paper. 126 x 48 cm. Private collection.

**OPP.08:343**; PP.08:141; Z.XXVI:342

---

**Nu debout.** Paris. [Spring]/1908. Graphite on paper. 63 x 48 cm. Private collection.

**OPP.08:344**; PP.08:142; Z.XXVI:343





**Nu debout.** Paris. [Spring]/1908. Graphite on paper. 32,5 x 23,5 cm. Private collection.

**OPP.08:348**; PP.08:146; Z.XXVI:348

---

**Paysage.** Paris. [Late/1907]  
[Spring/1908]. Gouache & charcoal on thick beige paper. 47,6 x 61,6 cm. The Metropolitan Museum of Art, NYC. (Inv 2014.464). Leonard A. Lauder Cubist Collection, Purchase, Leonard A. Lauder Gift, 2014. Formerly Kate Ganz Collection; Christie's. #0120, 1902, 11/07/07.

**OPP.08:352**; DR:180; FM:112; P.II:249;  
PP.08:101; Z.IIa:55; CI.47a\*:n/a;  
CI.79\*::68p; CO.13\*:24/15; GM.11\*:37;  
LL.14\*:n/a; MU.13b\*:39; PH.09\*:52;  
PH.30\*:65; PH.34a\*:51





**Deux femmes assises.** Paris. [Spring/1908] [1909]. Gouache & pencil on paper [Obverse of *Étude pour L'Offrande*. 25 x 32 cm. Sotheby's. #13, L18002, 02/28/18.

**OPP.08:353**; DR:304; PP.08:165; Z.VI:1022; NY.84d\*:n/a

---

**Masque de femme.** Paris. [Spring]/1908. Plaster. 18,3 x 16,4 x 12,6 cm. Private collection.

**OPP.08:361**; PP.08:115; WS:22.IB





**Carafe et trois bols.** Paris. [Spring~] [Summer]/1908. Oil on cardboard. 66 x 50,5 cm. The State Hermitage Museum, Saint Petersburg. (Inv 8986). Formerly State Museum of New Western Art, Moscow, 1948.

**OPP.08:032**; DR:176; FM:161; P.II:206; PP.08:184; Z.IIa:90; AB.07:90p; AP.11:91p; AP.89:23; AP.97:109p; BS.90a\*:24; DA.03:38; DU.95:17p; JB.92\*:9; JC.56:1; JL.06:89p; JR.96:44p; MR.21:3.30; MW.82\*:18; PA.54a\*:21; PA.71d\*:13; RP.60\*:276; SC.71:17; TG.94:231p; TV.06\*:9; UH.98:16; UP.00:296; WR.80\*:107p; WR.89\*:92p; WW.91:174p

**Nature morte au vase et à l'étoffe verte.** [Paris]. Spring~Summer/1908. Oil on canvas. 27,1 x 21,3 cm. Musée Picasso, Paris.

**OPP.08:092**; DR:178; MPP:27; P.II:195; PP.08:255; Z.XXVI:361; AB.07\*:n/a; AP.97:115p; DD.61:205p; MA.08a\*:n/a; MP.85:23; PA.79a\*:39





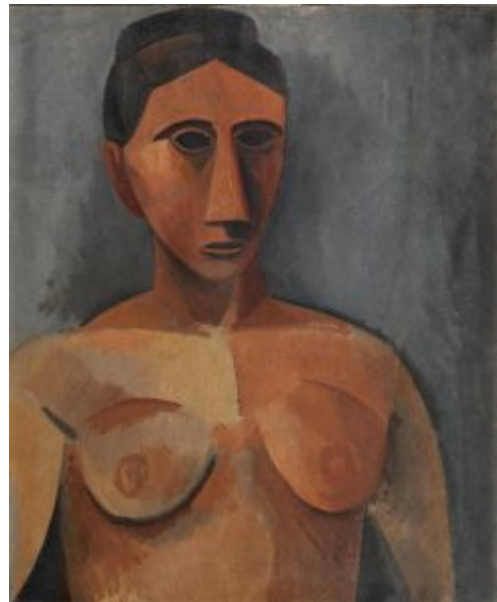
**Sebastià Junyer-Vidal devant Trois femmes.** Paris. Spring~Summer/1908. Gelatin silver print. 22 x 8,5 cm. Musée Picasso, Paris. (Inv APPH2807).

**OPP.08:099**; EC.16:75; JR.96:91p; TU.15:42p

---

**Torse de femme.** Paris. [Spring~] Summer/1908. Oil on canvas. 73 x 60 cm. Národní Galerie, Prague. (Inv O 8023). Formerly Vincenc Kramář Collection. Purchased from Kahnweiler, 05/31/11.

**OPP.08:110**; DR:134; FM:125; P.II:233; PP.08:190; Z.IIa:64; BS.55:251; FS.82:41p; GC.96:116p; JB.08:19p; JC.56:257; JL.51:26; JP.60:5; LO.67\*:132; PA.66b\*:168; PR.60\*:n/a; PS.05:11; UP.00:289; WR.80\*:109; WW.91:169p





**Paysage.** [Paris] [La Rue-des-Bois]. Spring~Summer/1908. Watercolor & gouache on paper. 64 x 49,5 cm. Kunstmuseum Bern. Hermann und Margrit Rupf-Stiftung.

**OPP.08:114**; DR:183; FM:146bis; P.II:239; PP.08:222; Z.XXVI:174; BN.39\*:1; BN.56\*:81; BS.40\*:33; BS.50\*:150; BS.55:145p; CG.93:56; CH.10\*:101p; DU.95:31p; JC.56:392; KB.01\*:37; KZ.25\*:353; NM.95:272p; PA.53a\*:13; PD.82:36p; RR.76:V; TO.94\*:187; TU.70\*:30; WR.89\*:99p; WW.91:177p; ZU.14\*:n/a

---

**Paysage.** Paris. [Summer] Spring~Summer/1908. Oil on wood panel [OïC]. 67 x 30 cm. Kunsthaus Zürich. On loan. J. Eichmann Collection, Zurich.

**OPP.08:153**; DR:182; FM:145; P.II:237; PP.08:162; Z.IIa:72; MI.53\*:12; TO.94:31p





**Bol vert et flacon noir.** Paris. Spring [~Summer]/1908. Oil on canvas. 61 x 51 cm. The State Hermitage Museum, Saint Petersburg. Formerly S. I. Shchukin Collection, Moscow.

**OPP.08:154**; DR:173; FM:160; P.II:208; PP.08:238; Z.IIa:89; AP.11:90p; AP.89:24; AP.97:108p; CG.93:44; JB.96:53; LO.12a\*:60; NY.12a\*:248; PA.54a\*:22; PA.71d\*:12; SC.11\*:248; WW.91:174p

---

**Paysage.** Paris. Spring~Summer/1908. Gouache over pencil on panel. 26,9 x 21,2 cm. Christie's. #48, 1900, 11/06/07.

**OPP.08:155**; DR:181; FM:221; P.II:277; PP.08:163; PP.10:061; Z.IIa:132







**Portrait d'André Salmon devant l'une des versions de Trois femmes.** Paris. [End/1907~] [Spring~Summer/1908]. Gelatin silver print. 11,1 x 8,1 cm. Musée Picasso, Paris. (Inv APPH2832).

**OPP.08:194**; AB.97b\*:73; BA.19b\*:17p; JR.96:57p; MU.18:173p; PD.94:67; WA.80a\*:88; WR.96:182p

**Verre, pot et livre.** Paris. [Spring~Summer]/1908. India ink on paper. [16,1] 16,4 x 13,7 cm. Christie's. #54, 4014, 03/26/15. Formerly Sotheby's. #24, PF4022, 09/23/04.

**OPP.08:221**; PP.08:244





**Cruche et compotier.** Paris. [Spring~Summer]/1908. Ink & brush on paper on panel. 16 x 12,5 cm. Sotheby's. #6, PF6020, 12/13/06.

**OPP.08:224**; PP.08:237

**Bol vert et tomates.** Paris. Spring~Summer/1908. Tempera on wood panel. 20,6 x 26,9 cm. Christie's. #507, 6146, 06/30/99. Formerly Marina Picasso Collection. (Inv 12096).

**OPP.08:260**; DR:175; P.II:207;  
PP.08:259; Z.XXVI:362; DD.61:57;  
GS.85\*:15; WW.91:176p





**Nus dans un paysage.** Paris.  
[Spring~Summer]/1908. Gouache, pen & India ink  
on paper. 32,3 x 49,5 cm. Musée Picasso, Paris.

**OPP.08:272**; MPP:613; LE.21\*:119

---

**Paysage.** Paris. Spring~Summer/1908.  
Watercolor on paper. 22,4 x 17,5 cm.  
Christine Ruiz-Picasso Collection.

**OPP.08:287**; PP.08:102; Z.VI:1023;  
TO.94\*:185





**Tête de femme.** Paris [La Rue-des-Bois].  
Spring~Summer/1908. Brush & India ink on wove paper. [31,7  
x 24,8] 31,9 x 24,4 cm. Musée Picasso, Paris. Don Maya  
Widmaier Picasso, 2014. Formerly Maya Widmaier Picasso  
Collection, Paris. (Inv 00986).

**OPP.08:304**; MPP:2014.1.1r; PP.08:253; Z.XXVI:355;  
BB.86\*:5; PP.20\*:90

---

**Étude pour L'Offrande.** Paris.  
[Spring~Summer]/1908. Graphite on paper [Reverse of  
*Deux femmes assises*]. 35 x 26 cm. Sotheby's. #13,  
L18002, 02/28/18.

**OPP.08:332**; PP.08:178; Z.VI:1026





**Nu assis aux bras levés.** Paris. [Spring]/1908~Early/1909. Pen & India ink on paper. 31,5 x 25 cm. Kunstmuseum Basel. (Inv 1968.1). Kupferstichkabinett, Karl August Burckhardt-Koechlin-Fonds, 1968.

**OPP.08:269**; P.II:315; PP.08:290; Z.XXVI:378; AH.13\*:15

---

**Tête d'homme.** Paris. [Summer~Fall] [Spring]/1908. Oil on wood panel [OIC]. 27 x 21 cm. Jean Masurel Collection, Paris.

**OPP.08:254**; DR:148; FM:174; P.II:274; PP.08:261; Z.IIa:73; BS.55:43; BU.50\*:n/a; JC.56:280; JL.51:27; JS.41:12; PA.75a\*:57; PA.76a\*:202





**Trois femmes: nu debout au bras levé (Étude).** Paris. [Mid-Spring]/1908. Charcoal on paper. 62,7 x 48,1 cm. Musée Picasso, Paris. Dation 1979.

**OPP.08:044**; MPP:554; P.II:140; PP.08:041; AB.07\*:191p;  
BU.22:22p; JO.06\*:n/a; MA.08a\*:n/a; ME.82a\*:14;  
MP.02\*:28; SP.04\*:n/a

---

**Trois femmes: nu debout (Étude).** Paris. Mid-Spring/1908. Charcoal on paper. 63 x 48 cm. The Picasso Estate.

**OPP.08:054**; P.II:151; PP.08:091; Z.XXVI:297





**Nu debout (Étude)**. Paris. Mid-Spring/1908. Charcoal on paper. 21 x 13,5 cm. Museo Picasso, Málaga. On temporary loan from Fundación Almine & Bernard Ruiz-Picasso para el Arte.

**OPP.08:056**; P.II:153; PP.08:124; Z.XXVI:379; MG.04b\*:31;  
NC.17\*:25

---

**Femme nue**. Paris. Mid-Spring/1908. Graphite on paper. 62,8 x 48,3 cm. Marina Picasso Collection. (Inv 1047).  
Courtesy Galerie Jan Krugier, Geneva.

**OPP.08:082**; P.II:179; PP.08:135; Z.VI:1001;  
NY.87c\*:19; RB.87\*:5





**Corps de femme de face.** Paris. Mid-Spring/1908. India ink on paper. 62,9 x 48 cm. Marina Picasso Collection. (Inv 1010).  
Courtesy Galerie Jan Krugier, Geneva.

**OPP.08:147**; PP.08:224; Z.XXVI:353; JR.14\*:44p; KB.99\*:26; NY.87c\*:18; PD.02\*:18

---

**Femme nue debout.** Paris. Mid-Spring/1908. Gouache on paper. 62 x 46 cm. Rijksmuseum Kröller-Müller, Otterlo.

**OPP.08:181**; DR:154; PP.08:010; Z.XXVI:286; AM.55\*:202; DU.28\*:374; KR.71\*:68; PA.20a\*:n/a; PA.71c\*:68; RT.50\*:37; WW.91:169p







**Corps de femme de face.** Paris. [Mid-Spring]/1908.  
Watercolor & pencil on paper. 63 x 48,4 cm. Museo Picasso,  
Málaga. On temporary loan from Fundación Almine & Bernard  
Ruiz-Picasso para el Arte.

**OPP.08:223**; DR:108; PP.08:227; Z.XXVI:357; DP.20\*:18;  
GA.00\*:11; GS.03:2.27

**Nu debout.** Paris. [Mid-Spring]/1908. Pencil on paper. 30 x  
20,8 cm. Sotheby's. #39, N09727, 05/18/17. Formerly  
Marina Picasso Collection.

**OPP.08:317**; PP.08:148; Z.XXVI:350





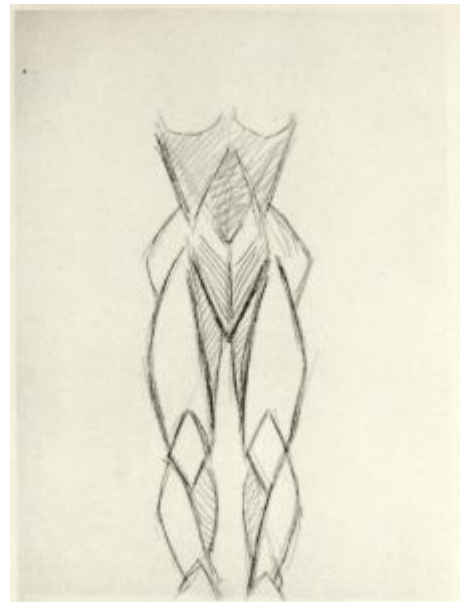
**Nu debout.** Paris. Mid-Spring/1908. Graphite on paper. 65 x 50 cm. Private collection.

**OPP.08:345**; PP.08:143; Z.XXVI:345

---

**Nu debout (Mi-corps).** Paris. Mid-Spring/1908. Graphite on paper. 21 x 17 cm. Private collection.

**OPP.08:346**; PP.08:144; Z.XXVI:346





**Baigneuse debout.** Paris. [Mid-Spring]/1908~1909. Charcoal on paper. 31,5 x 24 cm. Marina Picasso Collection. Courtesy Galerie Jan Krugier, Geneva.

**OPP.08:038**; P.II:310; PP.09:003; Z.VI:1012; JW.03\*:60

---

**Femme assise.** Paris. Late-Spring/1908. Graphite on paper. 21 x 17 cm. Private collection.

**OPP.08:337**; PP.08:047; Z.XXVI:299





**Femme assise.** Paris. Late-Spring/1908. Graphite on paper. 21 x 17 cm. Private collection.

**OPP.08:338**; PP.08:048; Z.XXVI:300

---

**Femme assise.** Paris. Late-Spring/1908. Graphite on paper. 21 x 17 cm. Private collection.

**OPP.08:339**; PP.08:049; Z.XXVI:301





**Femme à l'éventail (Fernande)**. Paris. Late-Spring~Summer/1908.  
Oil on canvas. 150 x 100 cm. The State Hermitage Museum, Saint Petersburg. (Inv 7705). Formerly S. I. Shchukin Collection, Moscow.

**OPP.08:021**; DR:168; FM:141; P.II:236; PP.08:200; Z.IIa:67;  
AB.07:10p; AP.11:80p; AP.89:31; AP.92:16; AP.97:95p; BB.07:315p;  
BS.55:40; BU.58\*:256; BX.65\*:93; DA.03:33; EC.02:169;  
GA.14:22p; GC.96:117p; HJ.96:83p; IS.98:45p; JC.56:37;  
JL.66\*:53; JR.96:88p; KS.62:9; LE.56\*:47p; MP.02\*:53;  
MU.72a\*:1850; NS.01:222; PA.54a\*:n/a; PA.73b\*:6; PC.01:149p;  
PD.09:115p; PD.82:36p; RR.06:250p; SC.71:24; TO.77:9; TV.06\*:8;  
UH.98:15; UP.00:288; WR.89\*:91p; WR.96:271p; WW.91:168p



**Tête d'homme**. Paris. Late-Spring~Summer/1908.  
Gouache on wood panel. [15,5 x 18] [27 x 21,5] 27 x 21,3 cm. Musée Picasso, Paris. Dation 1979.

**OPP.08:022**; DR:153; MPP:26; P.II:209; Z.XXVI:392;  
AB.05b\*:n/a; AB.07\*:204p; BD.16\*:21; DD.61:67p;  
FE.04\*:n/a; LW.15\*:33p; MA.08a\*:n/a; MN.80\*:n/a;  
MP.85:25; PA.79a\*:38; WR.80\*:116p; WW.91:170p



**Buste de femme accoudée (Femme dormante)**. Paris. Late-Spring~Summer/1908. Oil on canvas. 81,2 x 65,4 cm. The Museum of Modern Art, NYC. (Inv 575.70). Acquired by exchange from Galerie Beyeler, Basel, in 1970, through the Katherine S. Dreier Bequest, and the Hillman Periodicals, Philip Johnson, Miss Janice Loeb, Abby Aldrich Rockefeller, and Mr. and Mrs. Norbert Schimmel Funds. Formerly André Lefèvre Collection, Paris.

**OPP.08:111**; DR:170; FM:123; P.II:234; PP.08:051; Z.XXVI:303; AB.07:88p; AB.57\*:35p; BS.66a\*:13; CH.10\*:91p; HU.68\*:20; JC.56:440; JR.96:304p; MN.75\*:12; MU.70a\*:45; PA.53a\*:12; PA.54b\*:5; PA.60b\*:554; PA.64b\*:220; PD.09:114p; SP.51\*:116; UP.00:287; WR.12a:36; WR.59\*:125; WR.72\*:47p; WR.80\*:106p; WW.91:169p

---

**Femme nue assise**. Paris. Late-Spring~Summer/1908. Oil on canvas. 150 x 99 cm. The State Hermitage Museum, Saint Petersburg. Acquisition 1948. Formerly S. I. Shchukin Collection, Moscow.

**OPP.08:112**; DR:169; FM:122; P.II:235; PP.08:052; Z.IIa:68; AP.11:75p; AP.89:32; AP.97:93p; JC.56:276; JL.51:28; JR.96:80p; PA.54a\*:25; PA.71d\*:9; PC.95:36p; PD.09:116p; TG.94\*:13; TK.77a\*:10; UP.00:286; WW.91:168p





**Tête d'homme.** Paris. Late-Spring~Summer/1908. Oil on wood panel. 27 x 21 cm. Kunstmuseum Bern. Hermann und Margrit Rupf-Stiftung.

**OPP.08:251**; DR:144; FM:173bis; P.II:232; PP.08:202; AB.97b\*:53; AP.97:94p; BI.16\*:n/a; BN.56\*:82; CH.10\*:97p; KB.01\*:38; KZ.25\*:354; LM.06:30; MU.72a\*:1851

**Nue couché avec personnages (L'offrande).** Paris. [Spring] May/1908. Oil on wood panel. 36 x 62 cm. Musée Picasso, Paris. Dation 1979.

**OPP.08:091**; DR:164; FM:134; MPP:24; P.II:190; P.II:194; PP.08:030; Z.IIb:688; AB.07\*:193p; JR.96:81p; LS.75:42; LS.88:25; MA.14\*:103; MP.85:22; PA.79a\*:36; SD.05\*:19; TU.05\*:n/a; WR.80\*:108p





**Nu couché.** Paris. End-Spring/1908. Oil on wood panel. 27 x 21 cm. Musée Picasso, Paris. Dation 1979.

**OPP.08:018**; DR:156; MPP:22; P.II:222; PP.08:110;  
Z.XXVI:364; AB.07\*:n/a; BU.22\*:25; DD.61:56p;  
JC.01a\*:68; MA.08a\*:n/a; MP.85:20; PA.21f\*:151;  
PA.79a\*:34; PD.09:116p; UP.00:284; VR.16\*:n/a

---

**Femme nue debout, tournée vers la gauche.** Paris. End-Spring/1908. Oil on wood panel. 27 x 21 cm. Musée Picasso, Paris. Dation 1979.

**OPP.08:019**; DR:157; MPP:23; P.II:219; PP.08:111;  
Z.XXVI:365; AB.07\*:n/a; BU.22\*:26; DD.61:55p;  
MA.08a\*:n/a; MP.85:21; PA.21f\*:152; PA.79a\*:35;  
PC.01:22p; WW.91:172p







**Femme debout se tenant la hanche.** Paris. End-Spring/1908. Oil on wood panel. 27 x 21,5 cm. Museo Picasso, Málaga. On loan from Fundación Almine & Bernard Ruiz-Picasso para el Arte.

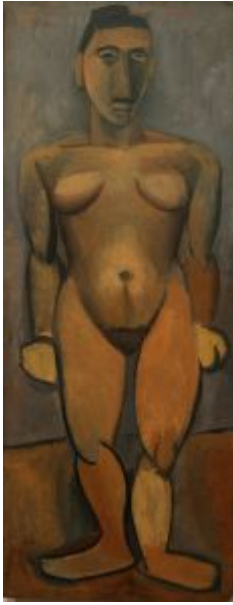
**OPP.08:020**; DR:158; P.II:220; PP.08:112; Z.XXVI:366; DD.61:54p; DP.20\*:15; GA.00\*:10; GS.03:2.4; JR.14\*:49p; LW.15\*:55p; NC.17\*:26; WW.91:172p

---

**Nu aux bras levés de profil.** Paris. [End-Spring]/1908. Oil on wood panel. 67 x 25,5 cm. Catherine Hutin-Blay Collection, Paris. Formerly Jacqueline Roque Picasso Collection.

**OPP.08:029**; DR:166; FM:127; P.II:205; PP.08:036; Z.IIb:693; MM.11a\*:111; PD.09:113p; TG.94\*:11; UP.00:280; WR.80\*:108p; WR.89\*:84p





**Nu debout de face.** Paris. [End-Spring]/1908. Oil on wood panel. 67 x 26,7 cm. Catherine Hutin-Blay Collection, Paris. Formerly Jacqueline Roque Picasso Collection.

**OPP.08:030**; DR:167; FM:128; P.II:204; PP.08:037; Z.IIb:694; JB.92:57p; MM.11a\*:110; PD.09:113p; TG.94\*:12; UP.00:279; WR.80\*:109; WR.89\*:84p

**Bols et cruche (Étude).** Paris. [Summer/1907]~[Spring] Summer/1908. Pencil on paper. 21 x 13,5 cm. Musée Picasso, Paris. Sketchbook 106.

**OPP.08:094**; MPP:1863.063r; P.II:198; PP.08:188; Z.IIb:659; BL.96:15.63r; EH.96:65p; JB.92:57p





**Femme à l'éventail: tête de femme (Étude).** Paris.  
[Summer/1907]~Summer/1908. Pencil on paper. 21 x 13,5 cm. Musée Picasso,  
Paris. Sketchbook 106.

**OPP.08:113**; MPP:1863.007r; P.II:238; PP.08:196; Z.IIb:700; BL.96:15.7r;  
WR.96:270p

---

**Tête.** Paris [La Rue-des-Bois].  
Summer/1908. Stone. 7 x 6,5 x 5,5 cm.  
The Picasso Estate.

**OPP.08:115**; FM:64; P.II:240; PP.07:796;  
WS:14; Z.IIb:606





**Paysage aux deux figures (Étude)**. Paris. Summer/1908. Pencil on paper. 21 x 13,5 cm. Musée Picasso, Paris. Sketchbook 106.

**OPP.08:118**; MPP:1863.054v; P.II:243; PP.08:221; BL.96:15.54v

---

**Bal du 14 juillet (à l'envers)**. Paris. [Summer/1907]~Summer/1908. Pencil on paper. 21 x 13,5 cm. Musée Picasso, Paris. Sketchbook 106.

**OPP.08:119**; MPP:1863.099v; P.II:244; PP.08:185; BL.96:15.99v; HS.88:16.99v





**Vue du lac entre deux baigneurs (Étude).**  
Paris. Summer/1908. Pen, ink, gouache & label stuck on on cardboard. [41,5 x 26] 45,5 x 26 cm. Hilde Thannhauser Succession, Bern. Silva-Casa Foundation.

**OPP.08:121**; FM:129; P.II:247; PP.08:192;  
Z.IIa:66; AB.00\*:48; AB.07:211p; AP.97:98p;  
CG.59:4; HS.98\*:138; IC.05:182p; LE.21\*:4;  
TO.94\*:194

---

**Pot de fleurs.** La Rue-des-Bois. Summer/1908. Oil on canvas. 39 x 21 cm. The Picasso Estate.

**OPP.08:129**; DR:195; P.II:264; PP.08:223; AP.97:115p





**Trois femmes dans l'atelier du Bateau Lavoir.** Paris. Summer/1908. Gelatin silver print. 10,9 x 8,1 cm. Private collection.

---

**OPP.08:132**; JR.14\*:48p

---

**La dryade (Étude).** Paris. [Spring~] Summer~Fall/1908. Gouache, ink & graphite on card laid on cradled paper. 62,5 x 37 cm. Private collection, UK. Formerly Christie's. #5, 9854, 11/06/01.

---

**OPP.08:134**; DR:132; FM:192; P.II:272; PP.08:277; Z.IIa:112; CG.12\*:4; IC.05\*:12; MP.02\*:43; NY.12a\*:252; SC.11\*:252





**Inscription.** Paris. [Summer/1907] ~ Summer/1908. Charcoal. 21 x 13,5 cm. Musée Picasso, Paris. Sketchbook 106.

**OPP.08:156;** BL.96:15.5r

**Quatre études pour Femme à l'éventail.** Paris.  
[Summer/1907]~Summer/1908. Pen, India ink & pencil. 21 x 13,5 cm.  
Musée Picasso, Paris. Sketchbook 106.

**OPP.08:157;** MPP:1863.006r; PP.08:195; BL.96:15.6r





**Femme à l'éventail (Étude)**. Paris. [Summer/1907]~Summer/1908. Pencil. 21 x 13,5 cm. Musée Picasso, Paris. Sketchbook 106.

**OPP.08:158**; MPP:1863.008r; PP.08:197; Z.IIb:701; BL.96:15.8r

---

**Femme à l'éventail (Étude)**. Paris. [Summer/1907]~Summer/1908. Pencil. 21 x 13,5 cm. Musée Picasso, Paris. Sketchbook 106.

**OPP.08:159**; MPP:1863.009r; PP.08:198; BL.96:15.9r







**Calculs.** Paris. [Summer/1907]~Summer/1908.  
Pencil. 21 x 13,5 cm. Musée Picasso, Paris.  
Sketchbook 106.

**OPP.08:160**; MPP:1863.010r; BL.96:15.10r

---

**Femme à l'éventail (Étude).** Paris. [Summer/1907]~Summer/1908.  
Pencil. 21 x 13,5 cm. Musée Picasso, Paris. Sketchbook 106.

**OPP.08:161**; FM:142; MPP:1863.011r; PP.08:199; Z.IIb:702;  
BL.96:15.11r





**Étude raturée de figure debout.** Paris. [Summer/1907]~Summer/1908. Pencil.  
21 x 13,5 cm. Musée Picasso, Paris. Sketchbook 106.

**OPP.08:162**; MPP:1863.013r; BL.96:15.13r

---

**Calculs.** Paris. [Summer/1907]~Summer/1908. Pencil. 21 x 13,5 cm.  
Musée Picasso, Paris. Sketchbook 106.

**OPP.08:163**; MPP:1863.014r; BL.96:15.14r





**Nu debout, de face: Nu dans ka forêt (Étude).** Paris.  
[Summer/1907]~Summer/1908. Pencil on paper. 21 x 13,5 cm. Musée Picasso,  
Paris. Sketchbook 106.

**OPP.08:164**; MPP:1863.016r; PP.07:571; BL.96:15.16r; HS.88:16.14r

**Nu debout, de face: étude pour Nu dans la forêt.** Paris.  
[Summer/1907]~Summer/1908. Charcoal. 21 x 13,5 cm. Musée Picasso,  
Paris. Sketchbook 106.

**OPP.08:165**; MPP:1863.017r; PP.07:572; BL.96:15.17r





**Nu debout aux bras levés: Nu dans la forêt (Étude).** Paris. [Summer/1907]~Summer/1908. Charcoal. 21 x 13,5 cm. Musée Picasso, Paris. Sketchbook 106.

**OPP.08:166**; MPP:1863.018r; PP.07:573; BL.96:15.18r

**Nu debout, de trois-quarts.** Paris. [Summer/1907]~Summer/1908. Charcoal. 21 x 13,5 cm. Musée Picasso, Paris. Sketchbook 106.

**OPP.08:168**; MPP:1863.020r; PP.07:582; Z.IIb:655; BL.96:15.20r





**Nu debout au bras levé, de profil.** Paris. [Summer/1907]~Summer/1908. Charcoal. 21 x 13,5 cm. Musée Picasso, Paris. Sketchbook 106.

**OPP.08:169**; MPP:1863.021r; PP.07:581; Z.IIb:654; BL.96:15.21r

---

**Nu debout, de face.** Paris. [Summer/1907]~Summer/1908. Charcoal. 21 x 13,5 cm. Musée Picasso, Paris. Sketchbook 106.

**OPP.08:170**; MPP:1863.022r; PP.07:574; BL.96:15.22r





**Nu debout au bras levé.** Paris. [Summer/1907]~Summer/1908. Charcoal. 21 x 13,5 cm. Musée Picasso, Paris. Sketchbook 106.

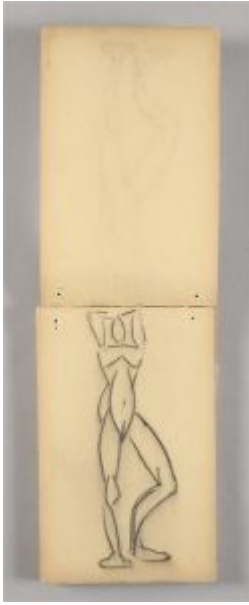
**OPP.08:171**; MPP:1863.023r; PP.07:575; BL.96:15.23r

---

**Nu debout aux bras levés.** Paris. [Summer/1907]~Summer/1908. Charcoal. 21 x 13,5 cm. Musée Picasso, Paris. Sketchbook 106.

**OPP.08:172**; MPP:1863.024r; PP.07:576; Z.IIb:665; BL.96:15.24r





**Nu debout aux bras levés, de face.** Paris. [Summer/1907]~Summer/1908. Charcoal. 21 x 13,5 cm. Musée Picasso, Paris. Sketchbook 106.

**OPP.08:173**; MPP:1863.025r; PP.07:580; Z.IIb:653; BL.96:15.25r

**Nu debout, penché en arrière, de profil.** Paris. [Summer/1907]~Summer/1908. Charcoal. 21 x 13,5 cm. Musée Picasso, Paris. Sketchbook 106.

**OPP.08:174**; MPP:1863.026r; PP.07:579; Z.IIb:652; BL.96:15.26r





**Nu debout, penché en arrière, de dos.** Paris. [Summer/1907]~Summer/1908.  
Charcoal. 21 x 13,5 cm. Musée Picasso, Paris. Sketchbook 106.

**OPP.08:175**; MPP:1863.027r; PP.07:577; BL.96:15.27r

---

**La baignade.** Paris. [Spring~]  
Summer/1908. Oil on canvas. 38 x 62,5  
cm. The State Hermitage Museum, Saint  
Petersburg. Formerly S. I. Shchukin  
Collection, Moscow.

**OPP.08:176**; DR:184; FM:130; P.II:191;  
PP.08:236; Z.IIa:93; AP.11:83p; AP.89:30;  
AP.97:99p; DA.03:35; PA.54a\*:n/a;  
PA.73b\*:7; WW.91:173p







**Étude de nu debout aux bras levés, de profil (Projet de sculpture)**. Paris. [Summer/1907]~Summer/1908. Pen & India ink. 21 x 13,5 cm. Musée Picasso, Paris. Sketchbook 106.

**OPP.08:177**; MPP:1863.031r; PP.07:560; BL.96:15.31r

**Étude de nu debout aux bras levés, de dos (Projet de sculpture)**. Paris. [Summer/1907]~Summer/1908. Pen & India ink. 21 x 13,5 cm. Musée Picasso, Paris. Sketchbook 106.

**OPP.08:178**; MPP:1863.032r; PP.07:561; BL.96:15.32r





**Esquisse de nu debout aux bras levés, de dos (Projet de sculpture).** Paris. [Summer/1907]~Summer/1908. Pen & India ink. 21 x 13,5 cm. Musée Picasso, Paris. Sketchbook 106.

**OPP.08:179**; MPP:1863.033r; PP.07:562; BL.96:15.33r

**Esquisse de nu debout aux bras levés, de profil (Projet de sculpture).** Paris. [Summer/1907]~Summer/1908. Pen & India ink. 21 x 13,5 cm. Musée Picasso, Paris. Sketchbook 106.

**OPP.08:180**; MPP:1863.034r; PP.07:555; BL.96:15.34r





**Nu assis (Étude)**. Paris. [Summer/1907]~Summer/1908. Pen & India ink on pencil. 21 x 13,5 cm. Musée Picasso, Paris. Sketchbook 106.

**OPP.08:182**; FM:194; MPP:1863.037r; PP.08:117; Z.IIb:660; BL.96:15.37r

**Femme à l'éventail: nu assis (Étude)**. Paris. [Summer/1907]~Summer/1908. Pencil. 21 x 13,5 cm. Musée Picasso, Paris. Sketchbook 106.

**OPP.08:183**; MPP:1863.040r; PP.08:194; BL.96:15.40r





**Femme (Étude)**. Paris. [Summer/1907]~Summer/1908. Charcoal. 21 x 13,5 cm. Musée Picasso, Paris. Sketchbook 106.

**OPP.08:185**; MPP:1863.043r; PP.07:745; BL.96:15.43r

**Femme (Étude)**. Paris. [Summer/1907]~Summer/1908. Charcoal. 21 x 13,5 cm. Musée Picasso, Paris. Sketchbook 106.

**OPP.08:186**; MPP:1863.044r; PP.07:747; Z.IIb:666; BL.96:15.44r





**Étude raturée.** Paris. [Summer/1907]~Summer/1908. Charcoal. 21 x 13,5 cm. Musée Picasso, Paris. Sketchbook 106.

**OPP.08:187**; MPP:1863.045r; BL.96:15.45r

**Deux esquisses de figures (à l'envers).** Paris. [Summer/1907]~Summer/1908. Pen & India ink. 21 x 13,5 cm. Musée Picasso, Paris. Sketchbook 106.

**OPP.08:189**; MPP:1863.046v; PP.07:661; BL.96:15.46v





**Étude de bras levé.** Paris. [Summer/1907]~Summer/1908. India ink wash. 21 x 13,5 cm. Musée Picasso, Paris. Sketchbook 106.

**OPP.08:190**; MPP:1863.047r; PP.07:662; BL.96:15.47r

---

**Nu debout, de face.** Paris. [Summer/1907]~Summer/1908. Pencil. 21 x 13,5 cm. Musée Picasso, Paris. Sketchbook 106.

**OPP.08:191**; MPP:1863.048r; PP.08:274; BD.16:39p; BL.96:15.48r





**Figure (Étude) (Tête de profil)**. Paris. [Summer/1907]~Summer/1908. Pencil. 21 x 13,5 cm. Musée Picasso, Paris. Sketchbook 106.

**OPP.08:192**; MPP:1863.049r; PP.07:791; BL.96:15.49r

**Femme nue assise (Étude)**. Paris. [Summer/1907]~Summer/1908. Pencil. 21 x 13,5 cm. Musée Picasso, Paris. Sketchbook 106.

**OPP.08:193**; FM:124; MPP:1863.052r; PP.08:050; Z.IIb:696; BL.96:15.52r





**Étude raturée.** Paris.  
[Summer/1907]~Summer/1908. Pencil. 21 x 13,5  
cm. Musée Picasso, Paris. Sketchbook 106.

**OPP.08:195**; MPP:1863.055r; BL.96:15.55r

---

**Homme assis (Étude).** Paris. Summer/1908. Pencil. 21 x 13,5 cm.  
Musée Picasso, Paris. Sketchbook 106.

**OPP.08:196**; FM:140; MPP:1863.056r; PP.08:057; Z.IIb:704;  
BL.96:15.56r







**Homme assis (Étude)**. Paris. Summer/1908. Pencil. 21 x 13,5 cm. Musée Picasso, Paris. Sketchbook 106.

**OPP.08:197**; MPP:1863.058r; PP.08:056; Z.IIb:703; BL.96:15.58r

---

**Homme assis (Étude)**. Paris. Summer/1908. Pencil. 21 x 13,5 cm. Musée Picasso, Paris. Sketchbook 106.

**OPP.08:198**; MPP:1863.059r; PP.08:058; BL.96:15.59r





**Homme assis (Étude)**. Paris. Summer/1908. Pencil. 21 x 13,5 cm. Musée Picasso, Paris. Sketchbook 106.

**OPP.08:199**; MPP:1863.060r; PP.08:059; BL.96:15.60r

---

**Cruche, bouteille et citron**. Paris. [Summer/1907]~Summer/1908. Pencil. 21 x 13,5 cm. Musée Picasso, Paris. Sketchbook 106.

**OPP.08:200**; MPP:1863.062r; PP.08:186; BL.96:15.62r





**La fermière en pied (Étude)**. Paris. [Summer/1907]~Summer/1908. Pencil. 21 x 13,5 cm. Musée Picasso, Paris. Sketchbook 106.

**OPP.08:201**; MPP:1863.064r; PP.08:212; BL.96:15.64r

**L'offrande (Étude)**. Paris.  
[Summer/1907]~Summer/1908. Pencil. 21 x 13,5 cm. Musée Picasso, Paris.  
Sketchbook 106.

**OPP.08:202**; MPP:1863.065r; PP.08:173;  
BL.96:15.65r





**Un projet de peinture avec deux femmes autour d'une nature morte (Étude).** Paris. [Summer/1907]~Summer/1908. Pen & India ink on pencil. 21 x 13,5 cm. Musée Picasso, Paris. Sketchbook 106.

**OPP.08:203**; MPP:1863.068v; PP.08:164; PP.09:156; Z.IIb:712; BL.96:15.68v

---

**Texte manuscrit.** Paris. [Summer/1907]~Summer/1908. Pen & India ink. 21 x 13,5 cm. Musée Picasso, Paris. Sketchbook 106.

**OPP.08:204**; MPP:1863.069r; BL.96:15.69r





**Masque de femme.** Paris. [Summer]/1908. Terracotta. 17,8 x 16 x 12 cm. Musée National d'Art Moderne, Centre Georges Pompidou, Paris. (Inv AM.1027S), Gift of Daniel-Henry Kahnweiler 1957. Also Sotheby's #41, NY7382, 11/10/99.

**OPP.08:205**; PP.08:114; WS:22.IA; JM.93:12p; NY.12a\*:389; RS.88:14p; SC.11\*:389; UP.00:273

---

**Homme assis (Étude).** Paris. Summer/1908. Pencil. 21 x 13,5 cm. Musée Picasso, Paris. Sketchbook 106.

**OPP.08:206**; MPP:1863.073r; PP.08:060; BL.96:15.73r





**Homme assis (Étude)**. Paris. Summer/1908. Pencil. 21 x 13,5 cm. Musée Picasso, Paris. Sketchbook 106.

**OPP.08:207**; MPP:1863.074r; PP.08:061; BL.96:15.74r

---

**Homme assis (Étude)**. Paris. Summer/1908. Pencil. 21 x 13,5 cm. Musée Picasso, Paris. Sketchbook 106.

**OPP.08:208**; MPP:1863.075r; PP.08:062; Z.IIb:705; BL.96:15.75r





**Nu couché avec personnages (Étude).** Paris. [Summer/1907]~Summer/1908. Pencil. 21 x 13,5 cm. Musée Picasso, Paris. Sketchbook 106.

**OPP.08:209**; MPP:1863.084v; PP.08:026; BL.96:15.84v

---

**Nu debout accoudé.** Paris. [Summer/1907]~Summer/1908. Pencil. 21 x 13,5 cm. Musée Picasso, Paris. Sketchbook 106.

**OPP.08:210**; MPP:1863.087r; PP.08:038; Z.IIb:695; BL.96:15.87r





**Nu debout accoudé.** Paris. [Summer/1907]~Summer/1908. Pencil. 21 x 13,5 cm. Musée Picasso, Paris. Sketchbook 106.

**OPP.08:211**; MPP:1863.088r; PP.08:039; BL.96:15.88r

**L'offrande (Étude).** Paris.  
[Summer/1907]~Summer/1908. Pencil. 21 x 13,5 cm. Musée Picasso, Paris. Sketchbook 106.

**OPP.08:212**; MPP:1863.090v; PP.08:166;  
BL.96:15.90v







**L'offrande (Étude).** Paris.  
[Summer/1907]~Summer/1908. Color pencil &  
pencil. 21 x 13,5 cm. Musée Picasso, Paris.  
Sketchbook 106.

**OPP.08:213**; MPP:1863.091v; PP.08:167;  
BL.96:15.91v

---

**L'offrande: deux études de nu au bras  
levé (Étude).** Paris.  
[Summer/1907]~Summer/1908. Pencil. 21  
x 13,5 cm. Musée Picasso, Paris.  
Sketchbook 106.

**OPP.08:214**; MPP:1863.092v; PP.08:168;  
BL.96:15.92v





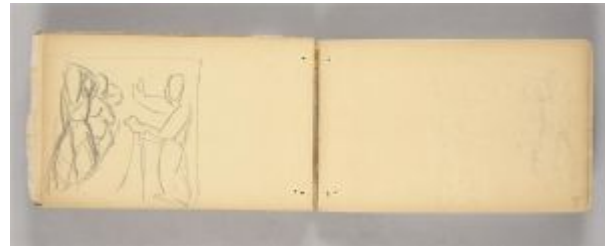
**Texte manuscrit.** Paris.  
[Summer/1907]~Summer/1908. Pencil. 21 x 13,5  
cm. Musée Picasso, Paris. Sketchbook 106.

**OPP.08:215**; MPP:1863.094r; BL.96:15.94r

---

**L'offrande (Étude).** Paris.  
[Summer/1907]~Summer/1908. Pencil. 21  
x 13,5 cm. Musée Picasso, Paris.  
Sketchbook 106.

**OPP.08:216**; MPP:1863.094v; PP.08:170;  
BL.96:15.94v





**L'offrande (Étude)**. Paris.  
[Summer/1907]~Summer/1908. Pencil. 21 x 13,5  
cm. Musée Picasso, Paris. Sketchbook 106.

**OPP.08:217**; MPP:1863.095v; PP.08:171;  
BL.96:15.95v

**L'offrande (Étude)**. Paris.  
[Summer/1907]~Summer/1908. Pencil. 21  
x 13,5 cm. Musée Picasso, Paris.  
Sketchbook 106.

**OPP.08:218**; MPP:1863.096v; PP.08:172;  
BL.96:15.96v





**Carafon, pot et verre (à l'envers)**. Paris. [Summer/1907]~Summer/1908. Pencil, pen & India ink. 21 x 13,5 cm. Musée Picasso, Paris. Sketchbook 106.

**OPP.08:219**; MPP:1863.103v; PP.08:187; Z.IIb:692; BL.96:15.103v; EH.96:65p

**Paysage (Étude)**. Paris. [Summer/1907]~Summer/1908. Pencil. 21 x 13,5 cm. Musée Picasso, Paris. Sketchbook 106.

**OPP.08:220**; FM:146; MPP:1863.111r; PP.08:160; Z.IIb:699; BL.96:15.111r





**Fernande Olivier et Dolly van Dongen devant Trois femmes.** Paris. [Summer]/1908. Gelatin silver print. 17,7 x 13 cm. Jeanine Warnod Archives, Paris.

**OPP.08:225**; AB.97b\*:76

**Femme nue allongée.** [Rue-de-bois] Paris. [Autumn] Summer/1908. Pen & brown ink on paper. 11,7 x 15,2 cm. Musée Picasso, Paris. Dation 1979.

**OPP.08:228**; MPP:625; PP.08:068; Z.XXVI:316; AB.07\*:n/a; PA.22d\*:55





**Portrait de Guillaume Apollinaire, moitié supérieure.** Paris. [Summer/1908]. Charcoal on paper [Reverse of *Femme nue de profil*]. 25 x 32 cm. Musée Picasso, Paris. Dation 1979.

**OPP.08:270**; MPP:575.v; MN.80\*:n/a;  
PA.79a\*:418; WR.96:186p

---

**Trois femmes: les trois nus (Étude).**  
Paris. Summer/1908. Brown ink on paper.  
24,8 x 32,7 cm. Musée Picasso, Paris.

**OPP.08:273**; MPP:579; PP.08:066;  
Z.XXVI:314





**Nu au visage hiératique les bras croisés au-dessus de la tête (Avec annotations manuscrites de proportions) (Étude).**

Paris. [Summer]/1908. Lead pencil on tracing paper. 31 x 21 cm. Musée Picasso, Paris. Dation 1979.

**OPP.08:281**; MPP:552; PP.08:205; PA.21f\*:119; RK.01\*:n/a

**Nu au visage hiératique, les bras croisés au-dessus de la tête (Étude).**

La Rue-des-Bois. Summer/1908. Pen & brown ink on paper. 26,7 x 19,6 cm. Musée Picasso, Paris.

**OPP.08:282**; MPP:551; PP.08:206; Z.VI:917; AB.07\*:n/a; DP.20:98p; JO.06\*:n/a; MI.18\*:n/a; MI.24\*:n/a; RK.01\*:n/a





**Main.** Paris. [Summer]/1908. Charcoal on paper. 48,2 x 62,7 cm. Musée Picasso, Paris.

**OPP.08:285**; MPP:553.v; PP.08:232; JO.06\*:n/a

---

**Main poing.** La Rue-des-Bois. [Summer]/1908. Watercolor on paper. 31,5 x 24 cm. Museo Picasso, Málaga. On temporary loan from Fundación Almine & Bernard Ruiz-Picasso para el Arte.

**OPP.08:292**; PP.08:215; Z.VI:1005; AP.97:106p; DP.20\*:16







**Femme (époque des Demoiselles d'Avignon) dans l'atelier du Bateau Lavoir.** Paris. Summer/1908. Gelatin silver print. 10,8 x 8 cm. Musée Picasso, Paris.

**OPP.08:295**; MPP:1998.92; JR.14\*:42p; JR.96:59p

**Odalisque au cerf.** Paris. [Summer]/1908. Pen & ink on paper. 9 x 15 cm. Private collection. Formerly Sotheby's. #235, 12/09/97.

**OPP.08:301**; PP.08:243





**Nature morte à la tête de mort dans l'atelier du Bateau Lavoir.** Paris. [Summer]/1908. Gelatin silver print. 10,9 x 8,1 cm. Private collection.

**OPP.08:307**; AB.97b\*:78; DK.99:299p

**Bols et cruche dans l'atelier du Bateau Lavoir.** Paris. Summer/1908. Gelatin silver print. 10,8 x 8 cm. Private collection.

**OPP.08:310**; JR.14\*:42p





**Étude de jambes.** La Rue-des-Bois. [Summer]/1908.  
Charcoal on paper. [32 x 24,7] 32,5 x 25 cm. Museo Picasso,  
Málaga. On temporary loan from Fundación Almine & Bernard  
Ruiz-Picasso para el Arte.

**OPP.08:312**; PP.08:207; Z.VI:919; DP.20\*:98p; JR.14\*:32p;  
NC.17\*:24

**Homme en bleu (Francisco Iturrino) dans l'atelier du  
Bateau Lavoir.** Paris. Summer/1908. Gelatin silver print.  
13 x 8 cm. Musée Picasso, Paris.

**OPP.08:319**; MPP:1998.90





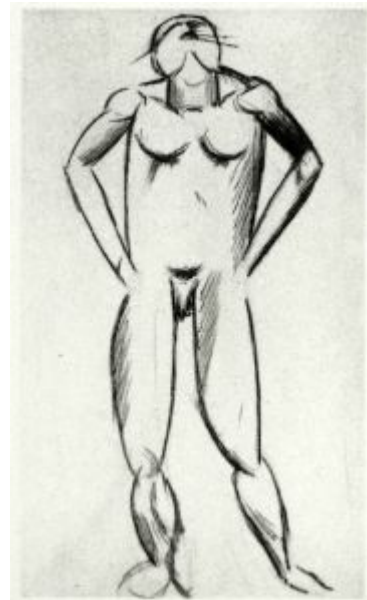
**Portrait de Dolly Van Dongen devant Trois femmes dans l'atelier du Bateau-Lavoir.** Paris. Summer/1908. Gelatin silver print. S/U. Musée Picasso, Paris. (Négatif verre N°50).

**OPP.08:324**

---

**Nu debout.** Paris. [Summer~Fall]/1908. Charcoal, ink & gouache on paper. 63,3 x 48,8 cm. Private collection. Formerly Sotheby's #23, 06/28/99. Marina Picasso Collection. (Inv 00944).

**OPP.08:299**; PP.08:252; Z.VI:1017; MP.81\*:58





**Jambes et pieds.** Paris. [Summer~Fall]/1908. Graphite on paper. 64 x 49 cm. Private collection.

**OPP.08:329**; PP.08:248; Z.VI:1007

---

**Étude pour Carnaval au bistrot.** Paris. [Summer~Fall]/1908. Watercolor [Oic]. 31,5 x 24 cm. Private collection.

**OPP.08:331**; PP.08:250; Z.VI:1016





**Paysage.** [La Rue-des-Bois] [Paris]. [Early-August] [September]/1908. Oil on canvas. 73 x 60 cm. Private collection, Paris. Formerly Sotheby's. #41, 10/22/80; André Meyer Collection, NY; Leo & Gertrude Stein Collection.

**OPP.08:006**; DR:192; FM:151; P.II:252; PP.08:204; Z.IIa:82; AP.97:110p; EB.70:57p; EC.02:170; EF.66:6; FA.70\*:48; GH.59:24p; MP.02\*:50; NM.95:7; NY.12a\*:245; PA.54b\*:6; RP.60\*:41; SC.11\*:245; TO.94\*:190; WR.89\*:94p; WW.91:177p

---

**Paysage: La Rue-des-Bois.** La Rue-des-Bois. Early-August [September]/1908. Oil on canvas. 100,8 x 81,3 cm. The Museum of Modern Art, NYC. (Inv 1413.74). Gift of David and Peggy Rockefeller, 1974.

**OPP.08:007**; DR:191; FM:152; P.II:251; PP.08:234; Z.IIa:83; AT.11\*:4; CT.23\*:6; EB.70:101p; FA.70\*:170p; MJ.55\*:15; MU.55\*:17c; NM.95:157p; RP.60\*:40; SY.75\*:39; TO.94\*:189; WR.72\*:50p; WR.80\*:111p; WR.89\*:108p





**Maisonnette dans un jardin (Maisonnette et arbres).** [La Rue-des-Bois] [Paris]. [Early-August/1908 [~Early/1909]. Oil on canvas. 92 x 73 cm. The Pushkin State Museum of Fine Arts, Moscow. (Inv 3350). Formerly S. I. Shchukin Collection, Moscow.

**OPP.08:013**; DR:190; FM:150; P.II:262; PP.08:230; Z.IIa:81; AB.07:215p; AP.11:100p; AP.89:38; AP.97:124p; BE.09\*:13; CG.05:47; DA.03:42; DC.04:40p; DC.98b:15; EC.02:173; GA.14:66p; JG.68:3A; JR.96:99p; NC.00:58; NM.95:11; PA.54a\*:n/a; PA.73b\*:8; PD.82:41p; PD.94:82; TO.94\*:192; UH.98:18; WR.89\*:100p; WW.91:177p

**Paysage: La Rue-des-Bois.** La Rue-des-Bois. [Summer] August/1908. Oil on canvas. 73 x 60 cm. Museo d'Arte Contemporanea, Milan. Riccardo Jucker Collection.

**OPP.08:263**; DR:186; FM:153; P.II:254; PP.08:235; Z.IIa:86; CT.23\*:7; FA.70\*:170p; JR.96:96p; MI.01\*:11; MJ.55\*:16; TO.94\*:188





**La fermière en pied.** La Rue-des-Bois. [Late-Summer~Early-Fall] August/1908. Oil on canvas. 81,5 x 65,5 cm. The State Hermitage Museum, Saint Petersburg. (Inv GE.9161). Acquisition 1948. Formerly S. I. Shchukin Collection, Moscow.

**OPP.08:004**; DR:193; FM:170; P.II:260; PP.08:219; Z.IIa:91; AB.46:62p; AP.11:89p; AP.89:35; AP.97:105p; BU.22:45p; DA.03:37; GT.10:45.2; JC.56:283; JG.68:2B; JL.51:31; JR.96:95p; MC.11:74p; PA.54a\*:23; RP.60\*:277; TO.64\*:48; WR.80\*:110p; WR.89\*:96p; WW.91:171p

---

**Maisonnette dans un jardin.** La Rue-des-Bois. [Late-Summer~Early-Fall] August/1908. Oil on canvas. 73,6 x 60,5 cm. The State Hermitage Museum, Saint Petersburg. Formerly State Museum of New Western Art, Moscow, 1930.

**OPP.08:005**; DR:189; FM:149; P.II:261; PP.08:233; Z.IIa:80; AP.11:93p; AP.89:33; AP.97:111p; BS.55:41; DA.03:39; HS.98\*:110; JR.96:92p; NM.95:6; PA.54a\*:n/a; RP.81:5.5; TK.64\*:9; TO.94\*:191; WR.80\*:111p; WR.89\*:98p; WW.91:177p







**Vase de fleurs, verre de vin, et cuillère.** La Rue-des-Bois. [Fall] August/1908. Oil on canvas. 81 x 65 cm. The State Hermitage Museum, Saint Petersburg. (Inv 8999). Formerly State Museum of New Western Art, Moscow, 1948.

**OPP.08:008**; DR:196; FM:159; P.II:263; PP.08:209; Z.IIa:88; AP.11:94p; AP.89:37; AP.97:117p; BS.90a\*:29; GT.10:46.3; JB.92\*:10; MP.83\*:43; MW.82\*:25; PA.54a\*:n/a; PA.71d\*:11; WR.89\*:97p; WW.91:175p

**La fermière: buste (Madame Putman).** La Rue-des-Bois. [Summer] August/1908. Oil on canvas. 81,2 x 65,3 cm. The State Hermitage Museum, Saint Petersburg. (Inv 6531). Acquisition 1930. Formerly S. I. Shchukin Collection, Moscow.

**OPP.08:123**; DR:194; FM:173; P.II:253; PP.08:218; Z.IIa:92; AP.11:88p; AP.89:34; AP.97:107p; BE.09\*:18; JR.96:95p; JS.41:13; PA.54a\*:18; PA.71d\*:14; PD.09:126p; RG.86:37; TG.94\*:14; WR.96:272p; WW.91:171p



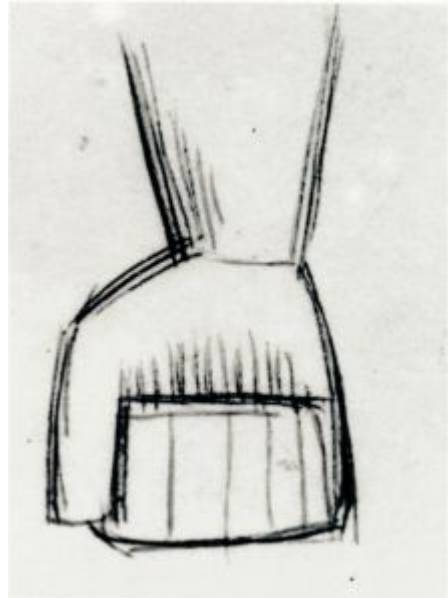


**La fermière en pied (Étude).** La Rue-des-Bois. [Summer] August/1908. Charcoal on paper. 81 x 65 cm. The Picasso Estate.

**OPP.08:125**; FM:171; P.II:256; PP.08:211; Z.VI:1003;  
AP.89:80p; AP.97:104p; JR.96:95p

**La fermière en pied: main fermée (Étude).** La Rue-des-Bois. [Summer] August/1908. Pencil & ink on paper. 63 x 48 cm. Marina Picasso Collection. Courtesy Galerie Jan Krugier, Geneva.

**OPP.08:126**; P.II:257; PP.08:214; Z.VI:1009;  
AP.97:106p





**La fermière en pied (Étude).** La Rue-des-Bois. [Summer] August/1908. Black pencil on folded paper, full sheet [Reverse of *La fermière en pied (Étude)*]. 48,2 x 62,8 cm. Musée Picasso, Paris. Dation 1979.

**OPP.08:127**; FM:172; MPP:606.r; P.II:258; PP.08:210; Z.VI:1002; BJ.19\*:n/a; HS.94\*:76

**La fermière en pied (Étude).** La Rue-des-Bois. [Summer] August/1908. Black pencil on paper [Obverse of *La fermière en pied (Étude)*]. 48,2 x 62,8 cm. Musée Picasso, Paris. Dation 1979.

**OPP.08:128**; MPP:606.v; P.II:259; PP.08:216; Z.VI:1006; AB.12\*:114p; GT.10:45.1; HS.94\*:77; JR.96:95p





**Nature morte au bouquet de fleurs.** La Rue-des-Bois. [Summer] August/1908. Oil on canvas. 38,2 x 46,5 cm. Sotheby's. #27, N09219, 11/04/14. Formerly Stephen Hahn Gallery, NY; Christie's. #60, 05/10/89; Mr. and Mrs. Peter A. Rubel Collection, NY.

**OPP.08:145**; DR:197; FM:166; P.II:265; PP.08:229; Z.IIa:94; AP.97:114p; BS.55:42; CG.93:37; JB.92:60p; JR.62\*:1.38; JR.96:99p; LY.53a\*:16; NY.54b\*:2; NY.54i\*:38; NY.57e\*:31; TA.66\*:6; VE.52\*:500; ZU.57\*:31

---

**La fermière (Madame Putman).** La Rue-des-Bois. [Spring] [Summer] August/1908. Charcoal on paper. 63 x 48 cm. Marina Picasso Collection. (Inv 991). Courtesy Galerie Jan Krugier, Geneva.

**OPP.08:146**; PP.08:217; Z.VI:1008; AP.89:80p; AP.97:104p; BA.03a\*:83; MP.81\*:60; NY.87c\*:17; TL.89\*:24; WR.96:272p





**Paysage, coucher de soleil.** La Rue-des-Bois. August/1908. Gouache on paper laid down on canvas. 62,5 x 47,9 cm. William S. Rubin and Phyllis Hattis Collection, NY. Formerly Sotheby's. #21, NY7647, 05/08/01.

**OPP.08:148**; DR:188; FM:148; P.II:246; PP.08:228; Z.IIa:78; AB.07:217p; AR.57\*:22; BR.13c\*:n/a; DR.14\*:n/a; HS.94\*:77; JL.51:33; JL.66\*:52; JR.96:318p; MU.13b\*:32; PA.18e\*:2; PA.52a\*:125

---

**Étude pour La fermière en pied (La fermière debout).** La Rue-des-Bois. August/1908. Charcoal on white laid paper. 62,9 x 48,3 cm. The Metropolitan Museum of Art, NYC. (Inv 1984.5.1). Gift of Mr. & Mrs. Nate B. Spingold & Joseph Pulitzer Bequest, by exchange, and Van Day Truex Fund, 1984. Formerly Marina Picasso Collection. (Inv 00993).

**OPP.08:290**; PP.08:213; Z.VI:1004; CG.12\*:5; DP.20:98p; GT.10\*:45; MP.81\*:61; PA.98b\*:n/a





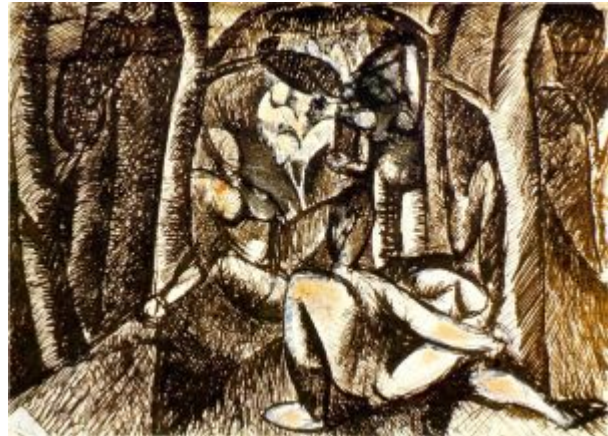
**Portrait de Guillaume Apollinaire, moitié inférieure.** Paris. August/1908. Charcoal on paper. 24,4 x 31,9 cm. Musée Picasso, Paris. Don Maya Widmaier Picasso, 2014. Formerly Maya Widmaier Picasso Collection, Paris.

**OPP.08:302**; MPP:2014.1.1v; PP.08:033; JR.96:98p; WR.96:186p

---

**Nu dans la forêt.** Paris [La Rue-des-Bois]. End-Summer/1908. Pen, brown ink & touches of colored pencil & gouache. 13,2 x 17,4 cm. Musée Picasso, Paris.

**OPP.08:116**; P.II:241; TO.94\*:195





**Les arbres.** Paris [La Rue-des-Bois]. End-Summer/1908. Oil on wood panel [OiC]. 27 x 21 cm. Private collection.

**OPP.08:262**; DR:185; FM:147; PP.08:208; Z.IIa:85

---

**Femme nue de dos et femme nue de profil.** La Rue-des-Bois [~Paris]. Late-August~Fall/1908. Charcoal, gouache & turpentine colors [OiC]. 64,5 x 49 cm. The Picasso Estate.

**OPP.08:130**; P.II:266; PP.08:136; Z.VI:1000





**Étude de nus: six sujets.** La Rue-des-Bois [~Paris]. Late-August~Fall/1908. India ink on paper on cardboard. 32 x 24,5 cm. The Picasso Estate.

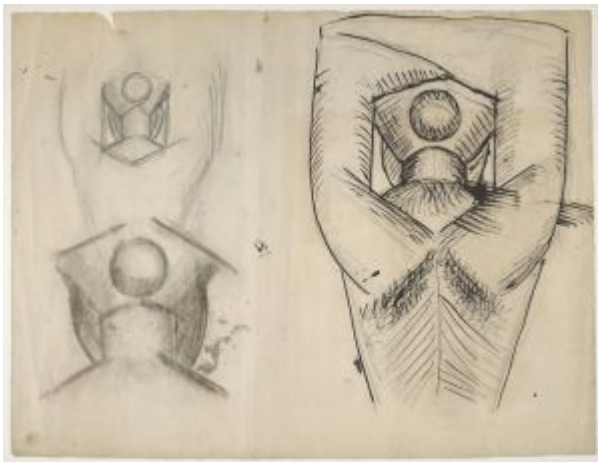
**OPP.08:131**; P.II:267; PP.08:220; Z.XXVI:352; BE.09\*:17; NM.06:76p

**Deux nus debouts et étude de pied.** La Rue-des-Bois [~Paris]. Late-August~Fall/1908. India ink & watercolor on back of article 'La torre del lavoro di Rodin'. 30 x 22,6 cm. Musée Picasso, Paris. Dation 1979.

**OPP.08:133**; MPP:608; P.II:269; PP.08:225; Z.XXVI:354; BD.16:38p; JO.06\*:n/a; MA.08a\*:n/a; MG.23a\*:56p; PA.21f\*:121; PA.79a\*:414; TG.94\*:50; WR.80\*:110p







**Trois études: femme de dos au chignon, les bras levés.** La Rue-des-Bois [~Paris]. Late-August~Fall/1908. Lead pencil, charcoal & India ink on paper. 48,2 x 62,7 cm. Musée Picasso, Paris. Dation 1979.

**OPP.08:286**; MPP:553.r; PP.08:231; Z.XXVI:344; GM.11:157p; JO.06\*:n/a; SY.11\*:n/a

**Trois femmes.** Paris. [Fall~Late] [End/1907~] Spring~Summer [~Fall]/1908 [~January/1909]. Oil on canvas. 200 x 178 cm. The State Hermitage Museum, Saint Petersburg. Formerly S. I. Shchukin Collection, Moscow; Leo & Gertrude Stein Collection.

**OPP.08:009**; DR:131; FM:178; P.II:180; P.II:275; PP.08:159; Z.IIa:108; AB.07:73p; AC.81:100p; AL.01:23; AP.11:86p; AP.89:28; AP.97:103p; BU.22:23p; CG.00:288; CG.01:32; DA.03:36; DC.04:39p; DC.70\*:229; DC.98b:16; DP.20:96p; DU.95:10; EB.70:80p; EC.02:159; EF.66:7; FA.70\*:46; GA.00:16p; GC.96:119p; GM.11:16p; GR.90:140p; GT.10:43.1; HF.07a:83p; HG.71:95p; IC.05:25p; IS.98:58p; JC.56:282; JF.03:4.2; JM.93:2p; JR.96:78p; JW.03:133p; LE.56\*:47p; MF.06:19p; NC.00:45; NC.10:42; NH.94:22p; NM.95:5; NY.12a\*:251; NY.21g:42p; PA.16d\*:n/a; PA.18e:32p; PA.23a:166p; PA.54a\*:46; PA.71d\*:15; PC.01:22-23p; PD.09:121p; PD.65:77p; PD.82:35p; PD.93:17.3; PD.94:77; RP.91:17; SC.11\*:251; SC.71:23; SG.06:19p; TH.75:60; TO.94:268p; UP.00:277; WR.80\*:115p; WR.89\*:111p; WW.91:166p





**La dryade (Nu dans une forêt).** Paris. [Spring~] [Summer~] Fall]/1908. Oil on canvas. 185 x 108 cm. The State Hermitage Museum, Saint Petersburg. (Inv GE.7704). Acquisition 1934. Formerly S. I. Shchukin Collection, Moscow.

**OPP.08:001**; DR:133; FM:190; P.II:273; PP.08:278; Z.IIa:113; AB.07:38p; AP.11:79p; AP.89:39; AP.97:97p; BS.22:20p; BU.22:45p; BU.58\*:257; BX.65\*:94; CG.05:50; DA.03:34; DB.89:67p; DP.20:94p; GA.00:16p; GC.96:118p; GM.81:21p; GT.10:44.1; HJ.83:67p; HJ.96:85p; IC.05\*:13; JL.06:85p; JR.96:88p; JW.03:152p; KS.62:10; LS.88:26; MM.00:49p; NM.95:257p; NW.70:47; PA.71d\*:16; PD.09:102p; PD.94:67; RP.60\*:278; RP.91:16; RR.76:III; SC.71:21; SG.06:69p; TH.75:59; TO.14:78p; TO.64\*:49; TO.77:10; TO.94:268p; UP.00:282; VB.99:17p; WR.80\*:114p; WR.89\*:103p; WW.91:172p

---

**Nature morte.** Paris. [Fall]/1908. Oil on panel. 20,3 x 25,4 cm. Private collection.

**OPP.08:003**; MF.06\*:1





**Fruits et verre.** Paris. Fall/1908 [~1909]. Tempera on wood panel. 26,7 x 21.6 cm. The Museum of Modern Art, NYC. (Inv 279.83). Formerly John Hay Whitney Collection, NYC.

**OPP.08:012**; DR:203; FM:207; P.II:285; PP.08:284; PP.0809:010; Z.IIa:123; AB.07:90p; BS.90a\*:34; EB.70:73p; FA.70\*:45; FL.11:34p; JB.92\*:11; JB.96:49; JC.56:287; JC.59:35p; JF.96:57p; JL.51:29; JL.71:219p; JR.96:82p; MR.53:45p; OW.71a\*:17; PD.94:86; RR.76:IV; SC.71:22; TH.75:75; UP.00:295; WA.83\*:56; WR.72\*:49p; WR.89\*:104p

---

**Tête de femme.** Paris. [Early] Fall/1908. Gouache on panel. 27 x 21 cm. The Picasso Estate.

**OPP.08:024**; DR:140; P.II:280; Z.XXVI:393; DD.61:63p; WW.91:172p





**Piores et pommes.** Paris. Fall/1908. Oil on panel. 27 x 21 cm. James W. and Marilyn Alsdorf Collection, Chicago.

**OPP.08:034**; DR:202; FM:156; P.II:286; PP.08:240; Z.IIa:70; GP.96:96p; JC.40:64p; LO.31\*:n/a; NY.38a\*:2; WR.89\*:104p

---

**Compotier aux piores et pommes.** Paris. Fall/1908. Oil wash on panel. 27 x 21 cm. Nationalgalerie, Museum Berggruen, Staatlichen Museen zu Berlin. (Inv MB14/2000). Formerly Sotheby's. #9, 10/12/60.

**OPP.08:035**; DR:200; FM:309; PP.08:242; PP.09:111; Z.XXVI:424; AP.97:122p; BA.18\*:105p; BR.96\*:17; CG.05:45; RK.94\*:33; RR.09\*:14; WR.89\*:104p





**Compotier et fruits.** Paris. [Summer] Fall/1908. Tempera on wood panel. 21 x 27 cm. Kunstmuseum Basel. (Inv G.1960.37). Gift of Dr. H. C. Richard Doetsch-Benziger, 1960.

**OPP.08:036**; DR:199; FM:157; P.II:282; PP.08:241; Z.IIa:71; AH.13\*:20; BS.56a\*:41; CG.93:62; JR.96:298p; MN.75\*:14; PA.14a\*:n/a; WR.89\*:106p

---

**Nu debout de dos.** [Paris]. [Fall]/1908. Gouache & pencil on paper. 63 x 48 cm. Catherine Hutin-Blay Collection, Paris.

**OPP.08:037**; P.II:305; PP.08:275; Z.XXVI:359; AB.07:108p; GL.81\*:4; TG.94\*:51; WR.89\*:109p





**Paysage aux deux figures.** Paris. [Summer] Fall/1908. Oil on canvas. 60 x 73 cm. Musée Picasso, Paris. Dation 1979.

**OPP.08:117**; DR:187; FM:144; MPP:28; P.II:242; P.III:99; PP.08:203; Z.IIa:79; AB.07\*:214p; AB.12\*:115p; AB.39a\*:80; AB.46:62p; AP.97:110p; BE.09:54p; BM.05:20p; BS.55:373p; BU.22\*:27; CT.23:113p; DD.61:205p; DK.58:34p; GB.87:55; GP.96:95p; HN.03\*:n/a; HS.98\*:111; JF.94a:30; JL.66\*:54; JR.96:93p; LL.14:28; MA.08a\*:n/a; MG.04b\*:30; MP.85:26; MR.21:3.35; MR.59\*:10; NM.95:8; NN.02\*:n/a; NY.12a\*:244; PA.18e\*:4; PA.23a\*:51p; PA.79a\*:40; PD.09:111p; PL.89:6r; RP.60\*:43; SC.11\*:244; SD.05\*:20; SY.11\*:n/a; TO.94\*:193; UP.00:283; WR.80\*:116p; WR.89\*:109p; WW.91:166p

**Visage-masque.** Paris. Fall/1908. Bronze. 15 x 10,5 cm. Private collection.

**OPP.08:135**; FM:72; P.II:279; PP.07:115; WS:13.II; Z.IIb:679; AP.97:128p





**Études.** Paris. Fall/1908. Pen & ink on paper. 31,5 x 48,5 cm. The Picasso Estate.

**OPP.08:136**; P.II:283; PP.09:070; Z.IIb:709

---

**Verre, pot et livre.** Paris. [Fall]/1908. Oil on canvas. 55 x 46 cm. The State Hermitage Museum, Saint Petersburg. Formerly S. I. Shchukin Collection, Moscow.

**OPP.08:149**; DR:198; FM:158; PP.08:245; Z.IIa:87; AP.89:36; AP.97:113p; DA.03:40; PA.54a\*:19; PA.71d\*:10; WW.91:174p





**Buste d'homme.** Paris. [1907~] [Spring] [Fall] /1908. Oil on canvas. 62,2 x 43,5 cm. The Metropolitan Museum of Art, NYC. (Inv 1996.403.5). Bequest of Florene M. Schoenborn, 1995. Formerly Walter P. Chrysler Jr. Collection, NY.

**OPP.08:188**; DR:143; FM:177; P.II:276; PP.08:264; Z.IIa:76; AB.39a\*:78; AB.39a\*:78; AB.46:63p; AB.65\*:17p; BA.36\*:2; BO.39\*:31; CH.37a\*:36; DT.37\*:2; GP.32\*:44; GT.10\*:46; JC.40:59p; KZ.32\*:37; LO.54b\*:26; MA.08b\*:n/a; NY.00a\*:66p; NY.12a\*:243; NY.32b\*:n/a; NY.36b\*:29; NY.37a\*:6; NY.39a\*:3; NY.55i\*:112; NY.97b\*:14; PA.11d\*:136; PA.98b\*:n/a; RI.41\*:158; RP.67a:7; RP.81:5.3; SC.11\*:243; TB.10\*:13; UP.00:290; WR.72\*:53p

**Verres et fruits.** Paris. Fall/1908 [Early/1909]. Oil on wood panel. 27 x 21 cm. Museum Ludwig, Köln. (Inv ML 01560). Schenkung 1994. Formerly André Stassart Collection, Liège.

**OPP.08:240**; DR:207; FM:162; P.II:292; PP.08:239; Z.IIa:97; BA.18\*:106p; EB.70:64p; FA.70\*:169p; NY.12a\*:249; PA.78a\*:44p; SC.11\*:249; TK.77a\*:12; WO.92\*:15







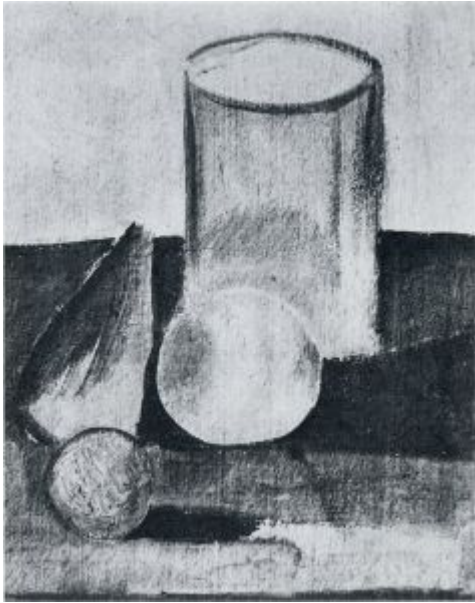
**Tasse et bananes.** Paris. Fall/1908 [Winter/1908~1909]. Oil on panel. [27 x 21] 27 x 21,3 cm. Phillips. #123, NY010424, 05/15/24.

**OPP.08:241**; DR:208; FM:169; P.II:295; PP.08:269; Z.IIa:100

**Verres et fruits.** Paris. Fall/1908 [Early/1909]. Oil on wood panel. 27 x 21,6 cm. Museo Thyssen-Bornemisza, Madrid. (Inv 708:1978.75). Formerly Nelson A. Rockefeller Collection, NY.

**OPP.08:242**; DR:206; FM:167; P.II:293; PP.08:267; Z.IIa:98; BE.09\*:29; EB.70:64p; FA.70\*:44; MA.23c\*:10; MF.06:16p; NY.12a\*:250; OW.71a\*:19; SC.11\*:250





**Verre et fruits.** Paris. Fall/1908. Oil on wood panel [OïC]. 27 x 21 cm. Private collection.

**OPP.08:261**; DR:205; FM:165; PP.08:266; Z.IIa:96

---

**Poires et pommes dans un compotier.**  
Paris. Fall/1908 [1909]. Gouache [OïC]. 23 x 28 cm. Private collection.

**OPP.08:264**; DR:201; FM:308; P.II:284;  
PP.08:260; PP.09:182; Z.VI:1099





**Verre et fruits.** Paris. Fall/1908 [Winter/1908~1909]. Oil on wood panel. 27 x 21 cm. The Barnes Foundation, Merion, PA. (Inv BF.87).

**OPP.08:265**; DR:204; FM:164; P.II:294; PP.08:265; Z.IIa:95

---

**Pomme.** Paris. [Fall]/1908. Charcoal. 17 x 12,5 cm. Sotheby's. #420, 6489, 11/04/93. Formerly Vincenc Kramář Collection. Purchased from Kahnweiler, 12/08/1911.

**OPP.08:293**; PP.08:271; JP.60:5r; PR.63\*:201; PS.05:14





**Compotier, fruits et verre (Nature morte au compotier).**

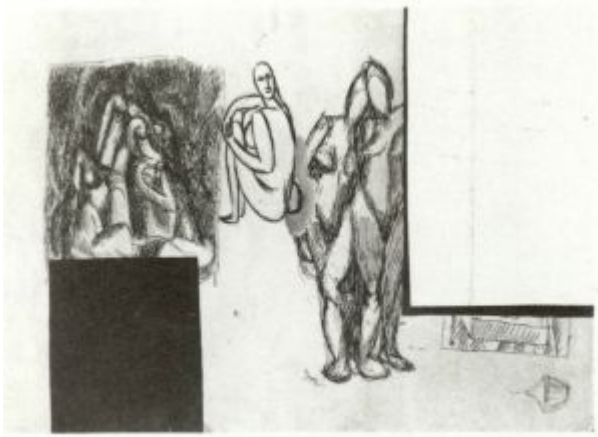
Paris. [Late] Fall~Winter/1908 [Spring/1909]. Oil on canvas. 92 x 72,5 cm. The State Hermitage Museum, Saint Petersburg. (Inv 9160). Formerly S. I. Shchukin Collection, Moscow.

**OPP.08:138**; DR:209; FM:211; P.II:288; PP.08:270; PP.09:016; Z.IIa:124; AP.11:99p; AP.89:40; AP.97:123p; DA.03:41; GB.87:59; GC.96:122p; JC.40:67p; JC.56:2; JG.90:21p; JL.66\*:59; PA.10a\*:n/a; PA.54a\*:31; PA.71d\*:20; PD.09:124p; PD.65:87p; TK.77a\*:15; UP.00:292; WW.91:175p

**Nature morte au cruchon.** Paris. [Summer/1907] Fall~Winter/1908. Pencil [charcoal] on paper. 63,5 x 46,5 cm. Private collection, Switzerland.

**OPP.08:139**; DR:57p; P.II:289; PP.09:139a





**Études.** Paris. [Fall~Winter]/1908. Brush, pen & ink on paper. 49,5 x 32 cm. Private collection.

**OPP.08:334**; PP.08:280; Z.VI:915

**Feuille d'études.** Paris. Late/1908. Ink on paper. 32 x 49,4 cm. The Museum of Modern Art, NYC. A. Conger Goodyear Fund.

**OPP.08:266**; PP.08:281; JB.92:66p;  
WR.72\*:54p





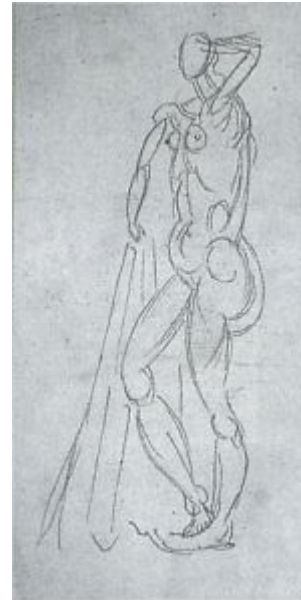
**Tête d'homme.** La Rue-des-Bois. Late/1908 [Spring/1909].  
Ink & charcoal on white laid paper. 60,5 x 47 cm. The  
Metropolitan Museum of Art, NYC. (Inv 2016.237.11). Gift from  
the Leonard A. Lauder Cubist Collection; Douglas Cooper  
Collection.

**OPP.08:284**; P.II:338; PP.09:063; Z.IIb:715; BO.05a\*:n/a;  
CG.12\*:5; DK.87\*:52; HO.90\*:55; LL.14\*:52; LO.83a\*:158;  
NY.21g\*:15; PH.88\*:n/a

---

**Baigneuse (Étude).** Paris. [Winter]/1908~1909. Graphite on paper. 32  
x 25 cm. Cahiers d'art Collection, Paris.

**OPP.08:296**; PD.94:84





**Nu debout.** Paris. Winter/1908~1909 [Spring/1909]. Charcoal on paper. 63,5 x 49 cm. Musée d'Art Moderne de Lille Métropole, Villeneuve d'Ascq. On loan from Musée Picasso, Paris. Jacqueline Roque Picasso Collection. Dation 1990.

**OPP.08:011**; MPP:1990.61; P.II:313; Z.VI:946; GR.90\*:59; HN.03\*:n/a

---

**Personnages.** Paris. [Winter]/1908 [1909]. Lead pencil on paper. 32,8 x 28,1 cm. Musée Picasso, Paris.

**OPP.08:016**; MPP:616; P.II:304; PP.08:291





**Tête d'homme.** Paris. Winter/1908~1909 [Spring/1909]. Gouache on wood panel. 27,1 x 21,3 cm. Musée Picasso, Paris. Dation 1979.

**OPP.08:025**; DR:251; MPP:29; P.II:312; PP.09:064; Z.XXVI:412; AB.05b\*:33; AB.07\*:n/a; BU.22\*:31; DD.61:69p; GB.87:65; MA.08a\*:n/a; MP.85:28; PA.23a\*:47p; PA.79a\*:41; WW.91:170p

**Femme nue au bord de la mer (Baigneuse).** Paris. Winter/1908~1909 [Spring]/1909. Oil on canvas. 129,8 x 96,8 cm. The Museum of Modern Art, NYC. (Inv 786.95). Louise Reinhardt Smith (Mrs. Bertram Smith) Bequest, 1995.

**OPP.08:026**; DR:239; FM:195; P.II:346; PP.09:015; Z.IIa:111; AB.07:89p; AN.18:14p; AP.89:94p; AP.97:118p; BF.16\*:n/a; BS.22:71p; CG.12:51p; DP.20:102p; IC.05:27p; JG.68:4B; JR.96:109p; JS.46:5; LS.75:127; MI.53\*:13; MJ.55\*:18; MK.73:35; MP.02\*:20; MU.55\*:20; NM.95:22p; NW.70:38; OS.56\*:34; PD.09:135p; PD.94:87; PH.45a\*:n/a; RP.60\*:44; RP.81:6.1; RR.09:59p; SG.88:159p; TH.75:61; UP.00:304; VK.97\*:51p; WR.12a:37; WR.80\*:117p; WR.89\*:119p; WW.91:183p







**Le compotier.** Paris. Winter/1908~1909 [Spring/1909]. Oil on canvas. 74,3 x 61 cm. The Museum of Modern Art, NYC. (Inv 263.1944). Acquired through the Lillie P. Bliss Bequest, 1944.

**OPP.08:027**; DR:210; FM:208; PP.08:283; Z.IIa:121; AB.39a\*:82; AB.46:65p; AC.46:198; AP.97:122p; BO.57b\*:2; BS.90a\*:45; DK.58:41p; DL.67\*:12; FL.11:36p; JB.92\*:14; JG.68:3B; MF.06:21p; MM.60\*:113; NM.95:17p; NY.39m\*:15; NY.54f\*:n/a; NY.55j\*:n/a; PD.09:124p; PI.63\*:n/a; RP.60\*:46; RP.81:6.2; SF.09:51p; TH.75:62; TV.06:131p; UP.00:293; VK.97\*:49p; WR.72\*:55p; WR.80\*:126p; WR.89\*:116p

**Main et pied.** Paris. [Winter]/1908. Charcoal on paper. 63 x 48,5 cm. The Picasso Estate.

**OPP.08:028**; P.II:307; PP.08:258; Z.XXVI:358



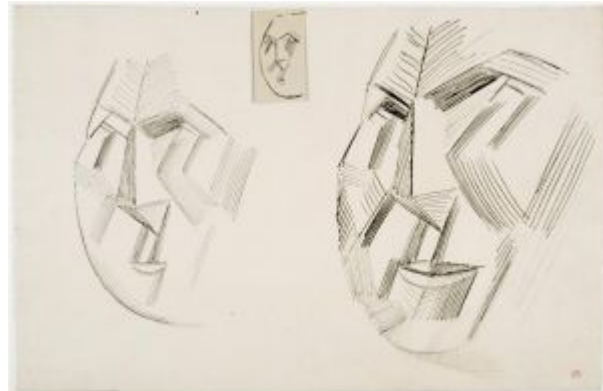


**Carnaval au bistrot (Étude)**. Paris. [Late] Winter/1908~1909 [Winter~Spring/1909]. Watercolor & pencil on paper. [22,5 x 22,3] 21 x 22,5 cm. Private collection, London.

**OPP.08:031**; DR:218; FM:131; P.II:327; PP.0809:001; Z.IIa:62; AP.89:97p; AP.97:125p; CH.31a\*:n/a; TR.80:9; WR.80\*:124p; WR.89\*:114p

**Trois visages de femme**. [Paris]. [Fall] Winter/1908~1909. Pen & India ink on pencil outlines drawn on paper & back of a photograph pinned to it. [32 x 48.8] 31,7 x 48,7 cm. Musée Picasso, Paris.

**OPP.08:033**; MPP:624; P.II:314; PP.09:173; Z.VI:1117; AB.07\*:n/a; MA.08a\*:n/a; SY.11\*:n/a





**Baigneuse.** Paris. Winter/1908~1909. Gouache on newspaper. 30 x 18,2 cm. Musée Picasso, Paris.

**OPP.08:040**; DR:231; MPP:611; P.II:311; PP.0809:012; Z.VI:986; AB.07:224p

---

**Nature morte, compotier (III.B).** Paris. Winter/1908~1909. Drypoint on Arches paper, edition 100. [13 x 11,8] 13,1 x 11,1 cm. Art Gallery of New South Wales, Sydney. Purchased 1986. Also Sotheby's. #248, L04160 , 07/01/04.

**OPP.08:137**; B.I:18; Ba:22.3b; FM:212; P.II:287; AH.13\*:41; AU.89\*:16; DC.70\*:280; FL.11\*:17; MI.01\*:21; WA.81b\*:4III





**Nature morte avec poissons et bouteilles.** Paris. [Fall] Winter/1908~[Early]/1909. Oil on canvas. 73,5 x 60 cm. Musée d'Art Moderne de Lille Métropole, Villeneuve d'Ascq. Donated by Geneviève & Jean Masurel, 1979.

**OPP.08:140**; DR:213; FM:210; P.II:291; PP.09:017; Z.IIa:122; FL.11:35p; JB.92\*:12; JC.56:304; JR.96:303p; MR.21:3.31; PA.35a\*:148; PA.50a\*:138; PA.80b\*:105; TK.64\*:13; UP.00:300; WW.91:175p

---

**Homme nu assis.** Paris. Winter/1908~1909. Oil on canvas. 96 x 76 cm. Musée d'Art Moderne de Lille Métropole, Villeneuve d'Ascq. Geneviève et Jean Masurel Donation.

**OPP.08:141**; DR:229; FM:205; P.II:298; PP.08:279; PP.0809:007; Z.IIa:117; AP.89:72p; AP.97:92p; BS.55:375p; CG.93:249; GP.32\*:49; JC.56:274; JL.66\*:56; KZ.32\*:45; MM.67:15; PA.37a\*:27; PA.53a\*:11; PA.60b\*:555; PA.78a\*:61p; PD.09:118p; RP.60\*:45; TK.77a\*:11; UP.00:291; WR.80\*:116p; YB.90:19





**Nus dans un paysage.** Paris. Winter/1908~1909.  
Pen & India ink on reverse of invoice. 21,1 x 27,4  
cm. Musée Picasso, Paris.

**OPP.08:142**; MPP:612; P.II:299; PP.08:256;  
Z.XXVI:380; TO.94:281p

---

**Paysage.** Paris. [Winter]/1908. India ink  
wash on paper. 23,5 x 31,5 cm. The  
Picasso Estate.

**OPP.08:143**; P.II:301





**Personnages.** Paris. [Winter]/1908~1909. Lead pencil & India ink on paper [Reverse of *Femme les bras levés*]. 14,5 x 5,7 cm. Musée Picasso, Paris.

**OPP.08:144**; MPP:615.r; P.II:303; PP.08:249; Z.VI:1010

---

**Tête de femme au chignon (Fernande).** La Rue-des-Bois~Paris. Winter/1908~1909 [~Spring, Summer/1909]. Pen & brown ink on paper. 63,3 x 48,3 cm. Private collection, Germany. Courtesy Galerie Haas, Zürich. Formerly Marina Picasso Collection. (Inv 01185).

**OPP.08:150**; FM:238; PP.09:037; Z.VI:1119; JW.03\*:6; MP.81\*:62; NY.87c\*:23; PD.02\*:21; RB.87\*:10; TL.89\*:26





**Femme nue debout.** Paris. [1907~] [Winter]/1908~1909. Charcoal on paper. 63,5 x 49 cm. Marina Picasso Collection. (Inv 1081). Courtesy Galerie Jan Krugier, Geneva.

**OPP.08:227**; Z.VI:945; MP.81\*:59; NY.87c\*:14; PD.02\*:19

---

**Baigneuse (Étude).** Paris. [Winter]/1908~1909. Pencil on paper. [48,9 x 31,7] 49,8 x 32,1 cm. The Museum of Modern Art, NYC. Fractional and promised gift of Marie-Josée and Henry R. Kravis. Formerly Sotheby's. #10, L09109, 12/07/99; Sotheby's. #421, 6489, 11/04/93.

**OPP.08:267**; FM:196; PP.0809:004; Z.IIa:110; NY.45a\*:18; PH.45a\*:n/a





**Arlequin et sa compagne sur un banc.** Paris. [Winter]/1908~1909 [Spring/1909]. Conté pencil & scratching on paper. 23,8 x 27.9 cm. Musée Picasso, Paris.

**OPP.08:271**; MPP:617; P.II:354; PP.08:286; Z.XXVI:375; RK.01\*:n/a

---

**Femme assise.** Paris. [Winter]/1908~1909. Brush & ink. 30 x 20 cm. Galerie Gmurzynska, Zurich. 2010.

**OPP.08:291**







**Baigneuse: nu debout au drapé (Étude)**. Paris. [Winter]/1908~1909. Lead pencil on paper [Obverse of *Nu debout*]. 32 x 25 cm. The Picasso Estate.

**OPP.08:294**; P.II:345; Z.XXVI:369; GA.00\*:14; PD.94:85

---

**Baigneuse (Étude)**. Paris. [Winter]/1908~1909. Pencil, pen & India ink on wove Vidalon paper. 32 x 14,2 cm. Maya Widmaier Picasso Collection, Paris. (Inv 01088).

**OPP.08:305**; Z.XXVI:371; BB.86\*:7





**Nature morte au gramophone.** Paris. Winter/1908~1909.  
Ink, watercolor & pencil on wove paper. 18 x 15 cm. Wright's.  
#2, 04/25/13.

**OPP.08:306**; PP.08:289; Z.XXVI:377

**Nature morte, compotier (I.B).** Paris.  
Winter/1908~1909. Drypoint & scraping on  
Arches Vergé paper. 13 x 11 cm. Musée Picasso,  
Paris. Dation 1979.

**OPP.08:322**; Ba:22.1B; MPP:1913; PA.79a\*:n/a





**Nature morte, compotier (II).** Paris.  
Winter/1908~1909. Drypoint & scraping on Arches Vergé  
paper. 13 x 11 cm. Musée Picasso, Paris. Dation 1979.

**OPP.08:323**; Ba:22.2; MPP:1914; PA.79a\*:n/a

**Nu debout: étude pour Baigneuse.** Paris.  
[Winter]/1908~1909. Graphite on paper. 25 x 26  
cm. Private collection.

**OPP.08:342**; Z.XXVI:368





**Nature morte au compotier (I)**. Paris. Winter/1908~1909. Drypoint & scraping. 13,1 x 11 cm. Musée Picasso, Paris. Dation 1979.

**OPP.08:354**; Ba:22.1; MPP:1912; PA.79a\*:n/a

**Nature morte au compotier (III)**. Paris. Winter/1908~1909. Drypoint & scraping. 13,1 x 11 cm. Musée Picasso, Paris. Dation 1979.

**OPP.08:355**; Ba:22.3; MPP:1915; PA.79a\*:n/a





**Maison.** Paris. [Winter]/1908~1909. Black chalk. 35,5 x 31 cm. Musée Picasso, Paris.

**OPP.08:360**; MPP:618.v; PP.08:288

---

**Nu debout.** Paris. 1908. Pencil on paper. 62,7 x 48,1 cm. Museo Picasso, Málaga. On temporary loan from Fundación Almine & Bernard Ruiz-Picasso para el Arte.

**OPP.08:226**; PP.08:147; Z.XXVI:349; DP.20\*:20; LW.15\*:54p





**Masque de femme.** Paris. 1908 [~1957]. Bronze [Vast after *Masque de femme*]. 18,3 x 17,5 x 11,8 cm. The Hirshhorn Museum and Sculpture Garden, Smithsonian Institution, Washington, DC. (Inv 66.4052). Gift of Joseph H. Hirshhorn, 1966. Also Mr. & Mrs. Sampson R. Field Collection, NY; A. Surroca Collection; Sotheby's. #419, 6489, 11/04/93.

**OPP.08:243**; FM:143; PP.08:116; WS:22.II; AU.89\*:14; BL.08\*:21; FA.70\*:n/a; FC.00\*:21; JR.62\*:9.11; MA.97a\*:1; MM.07\*:47; NY.58c\*:n/a; PA.66h\*:214; RP.67c\*:11; TO.64\*:n/a

**Bol vert et flacon noir dans l'atelier du Bateau-Lavoir.** Paris. 1908. Gelatin silver print. S/U. Musée Picasso, Paris. Négatif verre N°88.

**OPP.08:320**





**Portrait de Guillaume Apollinaire.** Paris. 1908. Charcoal on Vélín paper [Combination of *Portrait de Guillaume Apollinaire, moitié supérieure* and *Portrait de Guillaume Apollinaire, moitié inférieure*]. 49,2 x 31,9 cm. Musée Picasso, Paris. Dation 1979.

**OPP.08:321**; MPP:575.vB; MPP:2014.1.1vB; MN.80\*:n/a; PA.79a\*:n/a

---

**Nu assis.** Paris. 1908. Terracotta. 10,6 cm. Sotheby's. #5, PF1816, 10/18/18.

**OPP.08:325**; PP.08:119; WS:23.I





**Femme nue debout.** Paris. 1908. Graphite on paper. 31,5 x 23,7 cm.  
Private collection.

**OPP.08:330**; Z.VI:1013

**Nature morte.** Paris. 1908. Crayon on paper. 22 x 34 cm.  
Private collection.

**OPP.08:333**; FM:209; PP.08:246; Z.VI:1076







**Tête de femme.** Paris. 1908. Pen & India ink on paper. [17 x 11] 16,9 x 10,3 cm. Christie's. #21, 22433, 04/04/23.

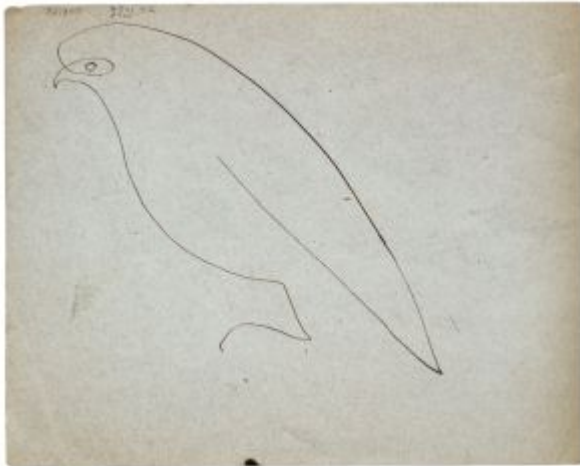
**OPP.08:335**; Z.XXVI:383

---

**Nu debout.** Paris. 1908. Graphite on paper. 63 x 48 cm. Private collection.

**OPP.08:347**; PP.08:145; Z.XXVI:347





**Falcon.** Paris. 1908. Graphite on paper. 17,5 x 22,3 cm. Private collection. (Carnet de dessin, 3e de couverture).

**OPP.08:356**; LE.21\*:210\*

**Le mélange de développeur.** Paris. 1908!1909. Ink on paper. S/U. Private collection.

**OPP.08:015**; AM.01:5.6

Revelador mixto	
Agua	1000 gms
Sulfato de sodio	100
Carbonato de potasa	50
Hidroquinona	7
Metol	3
Bromuro de Potasio	2



**Portrait de Fernande Olivier.** Paris. 1908~1909. Gelatin silver print. 25,4 x 20,5 cm. Musée Picasso, Paris. (Inv PH2799).

**OPP.08:124**; AB.97b\*:82; MD.02:72p; PP.20\*:95

---

**Inscription.** Paris. [1908~1909]. Pencil on envelope. S/U. Private collection.

**OPP.08:184**; AM.01:5.7





**Autoportrait à la pipe, Bateau Lavoir.** Paris. [1907]  
[1908~1909]. Gelatin silver print. 17 x 12,2 cm. Musée Picasso,  
Paris. (Inv APPH 2810).

**OPP.08:308**; AB.97b\*:80; JR.14\*:46p; JR.96:9p; LA.16:9p;  
OW.13:24p; TE.21:34p; YP.13:100p

---

**Portrait de Fernande Olivier.** Paris. [1906] 1908~1909.  
Gelatin silver print. S/U. Musée Picasso, Paris. (Inv  
FPPH147).

**OPP.08:313**; FO.01:2p; JR.96:47p; MD.02:70p;  
WR.80:56p





**Nu debout et tête de femme.** Paris. 1908~1909. Graphite on paper. 49 x 31,5 cm. Private collection.

**OPP.08:340**; Z.XXVI:373

**Nu debout.** Paris. 1908~1909. Graphite on paper [Reverse of *Baigneuse: nu debout au drapé (Étude)*]. 32 x 25 cm. Private collection.

**OPP.08:341**; Z.XXVI:370





**Nu assis.** Paris. 1908~1909. Graphite on paper. 15,5 x 8,5 cm. Private collection.

**OPP.08:349**; Z.XXVI:387

**Portrait de Ignacio Pinazo Martinez, atelier du Bateau-Lavoir.** Paris. 1908~1909. Gelatin silver print. 18,1 x 13 cm. Musée Picasso, Paris. (Inv APPH2805).

**OPP.08:350**





**Portrait de Fernande Olivier et Georges Braque.** Paris. 1908~1910. Gelatin silver print. 10,7 x 8,2 cm. Musée Picasso, Paris. (APPH 14398).

**OPP.08:300**; AB.97b\*:9; PP.20\*:94; PS.08:85p

**Autoportrait.** Paris. [1908~1914]. Gelatin silver print. 10,9 x 6,8 cm. Musée Picasso, Paris.

**OPP.08:309**; YP.13:102p

